

BBS4 Polyclonal Antibody

Catalog number: 12766-1-AP

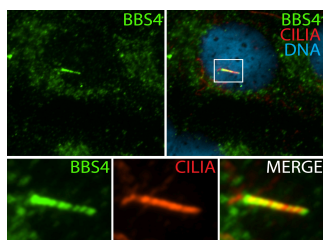
Size: 21 µg/150 µl

Source: Rabbit

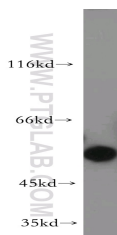
Isotype: IgG

Synonyms:

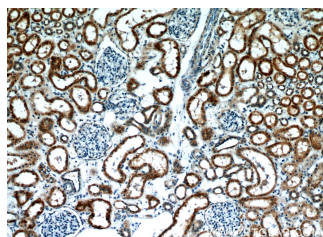
BBS4; Bardet Biedl syndrome 4,
BBS4



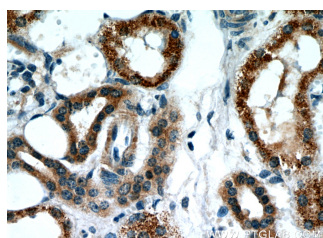
IF result (cytoplasm and the length of cilia cilia stain) of anti-BBS4 (12766-1-AP; 1:50) with serum-starved hTERT-RPE1 cell (MeOH fixed) by Dr. Moshe Kim.



HEK-293 cells were subjected to SDS PAGE followed by western blot with 12766-1-AP(BBS4 antibody) at dilution of 1:500



Immunohistochemical of paraffin-embedded human kidney using 12766-1-AP(BBS4 antibody) at dilution of 1:50 (under 10x lens)



Immunohistochemical of paraffin-embedded human kidney using 12766-1-

Applications

Tested applications:	ELISA, IHC, IF, WB
Cited applications:	WB
Species specificity:	Human, Mouse, Rat; other species not tested.
Cited species:	Rat
Calculated BBS4 MW:	519aa, 58 kDa
Observed BBS4 MW:	50-60 kDa
Positive WB detected in	HEK-293 cells, HeLa cells, mouse kidney tissue
Positive IHC detected in	Human kidney tissue
Positive IF detected in	HTERT-RPE1 cells
Recommended dilution:	WB: 1:200-1:2000 IHC: 1:20-1:200 IF: 1:20-1:200

Application key: WB = Western blotting, IHC = Immunohistochemistry, IF = Immunofluorescence, IP = Immunoprecipitation

Immunogen information

Immunogen:	Ag3430
GenBank accession number:	BC027624
Gene ID (NCBI):	585
Full name:	Bardet-Biedl syndrome 4

Product information

Purification method:	Antigen affinity purification
Storage:	PBS with 0.02% sodium azide and 50% glycerol pH 7.3. Store at -20°C.

AP(BBS4 antibody) at
dilution of 1:50 (under 40x
lens)