

## beta Tubulin Polyclonal Antibody

Catalog number: 10068-1-AP

Size: 20 µg/150 µl

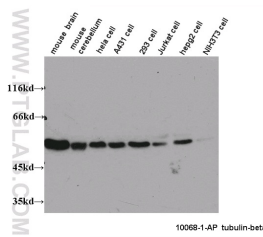
Source: Rabbit

Isotype: IgG

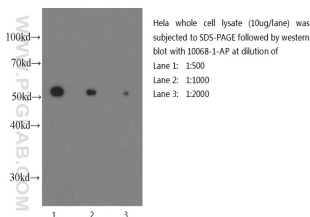
Synonyms:

TUBB3; beta 4, beta tubulin,

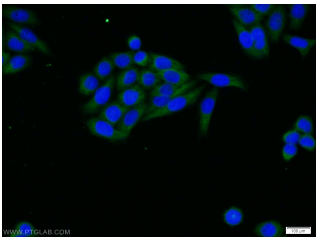
MC1R, TUBB, tubulin



WB results on multiple cells/tissues with anti-Tubulin-beta (10068-1-AP) at dilution 1:1,000.



Western blot of HeLa cell with anti-Tubulin-Beta (10068-1-AP) at various dilutions.



Immunofluorescent analysis of HeLa cells using 10068-1-AP (Tubulin-beta Antibody) at dilution of 1:25 and Alexa Fluor 488-conjugated AffiniPure Goat Anti-Rabbit IgG(H+L)

### Background

There are five tubulins in human cells: alpha, beta, gamma, delta, and epsilon. Tubulins are conserved across species. They form heterodimers, which multimerize to form a microtubule filament. An alpha and beta tubulin heterodimer is the basic structural unit of microtubules. The heterodimer does not come apart, once formed. The alpha and beta tubulins, which are each about 55 kDa MW, are homologous but not identical. Alpha, beta, and gamma tubulins have all been used as loading controls. Tubulin expression may vary according to resistance to antimicrobial and antimitotic drugs.

### Applications

Tested applications:	ELISA, WB, IHC, IF, IP
Cited applications:	WB
Species specificity:	Human, Mouse, Rat; other species not tested.
Cited species:	Human, zebrafish
Calculated beta Tubulin MW:	450aa, 50 kDa
Observed beta Tubulin MW:	50-55 kDa
Positive WB detected in	Multi-cells/tissue, A431 cells, COLO 320 cells, HEK-293 cells, HeLa cells, HepG2 cells, human brain tissue, Jurkat cells, mouse brain tissue, Neuro-2a cells, NIH/3T3 cells, rat brain tissue, SH-SY5Y cells
Positive IP detected in	Mouse brain tissue
Positive IHC detected in	Mouse brain tissue, human brain tissue, rat brain tissue
Positive IF detected in	HeLa cells
Recommended dilution:	WB: 1:500-1:5000 IP: 1:500-1:5000 IHC: 1:20-1:200 IF: 1:10-1:100

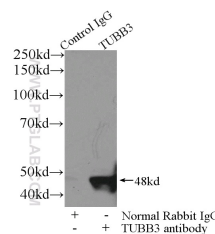
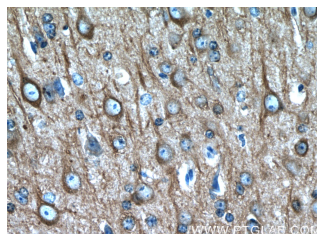
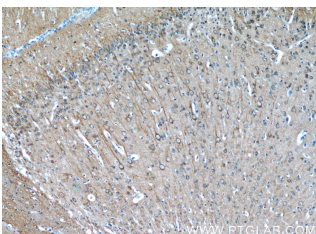
Application key: WB = Western blotting, IHC = Immunohistochemistry, IF = Immunofluorescence, IP = Immunoprecipitation

### Immunogen information

Immunogen:	Ag0117
GenBank accession number:	BC000748
Gene ID (NCBI):	10381
Full name:	Tubulin, beta 3

### Product information

Purification method:	Antigen affinity purification
Storage:	PBS with 0.1% sodium azide and 50% glycerol pH 7.3. Store at -20°C.



**Immunohistochemistry of  
paraffin-embedded mouse  
brain tissue slide using 10068-  
1-AP( Tubulin-beta Antibody)  
at dilution of 1:50 (under 10x  
lens)**

**Immunohistochemistry of  
paraffin-embedded mouse  
brain tissue slide using 10068-  
1-AP( Tubulin-beta Antibody)  
at dilution of 1:50 (under 40x  
lens)**

**IP Result of anti-Tubulin-beta  
(IP:10068-1-AP, 3ug;  
Detection:10068-1-AP 1:1000)  
with mouse brain tissue lysate  
3600ug.**