

ELAVL2 Polyclonal Antibody

Catalog number: 14008-1-AP

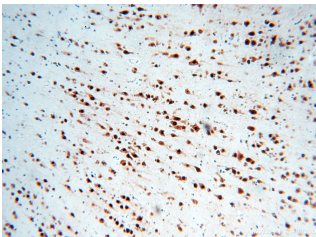
Size: 55 µg/150 µl

Source: Rabbit

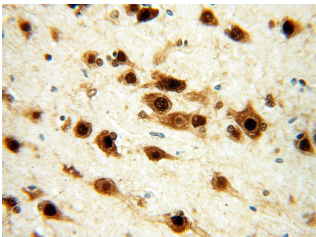
Isotype: IgG

Synonyms:

ELAVL2; ELAV like neuronal protein 1, ELAV like protein 2, ELAV2, ELAVL2, HEL N1, HELN1, Hu antigen B, HUB



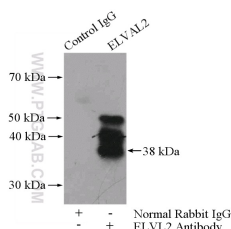
Immunohistochemical of paraffin-embedded human brain using 14008-1-AP(ELAVL2 antibody) at dilution of 1:100 (under 10x lens)



Immunohistochemical of paraffin-embedded human brain using 14008-1-AP(ELAVL2 antibody) at dilution of 1:100 (under 40x lens)



mouse cerebellum tissue were subjected to SDS PAGE followed by western blot with 14008-1-AP(ELAVL2 antibody) at dilution of 1:3000



IP Result of anti-ELAVL2

Background

The ELAV (embryonic lethal abnormal visual system) gene of *D. Melanogaste* is the the first identified member of a family of neuronal RNA binding proteins that is conserved in metazoans. The proteins in this family contain three RNA Recognition Motifs (RRM), with a hinge region separating the second and third RRM and an optional non-conserved N-terminal region. The hinge includes signals essential for nuclear export and subcellular localization [PMID:9874760]. Elav is expressed specifically in the neurons and is required for the correct development and maintenance of the nervous system. ELAVL2 can binds RNA, and recognize a GAAA motif. In addition, it can bind to its own 3'-UTR, the FOS 3'-UTR and the ID 3'-UTR[PMID:18715504,21695151].

Applications

Tested applications:	ELISA, WB, IHC, IP
Cited applications:	IF
Species specificity:	Human,Mouse,Rat,Zebrafish; other species not tested.
Cited species:	Chicken
Calculated ELAVL2 MW:	39 kDa
Observed ELAVL2 MW:	38-45 kDa
Positive WB detected in	Mouse cerebellum tissue
Positive IP detected in	Mouse cerebellum tissue
Positive IHC detected in	Human brain tissue
Recommended dilution:	WB: 1:1000-1:10000 IP: 1:500-1:5000 IHC: 1:20-1:200

Application key: WB = Western blotting, IHC = Immunohistochemistry, IF = Immunofluorescence, IP = Immunoprecipitation

Immunogen information

Immunogen:	Ag5105
GenBank accession number:	BC030692
Gene ID (NCBI):	1993
Full name:	ELAV (embryonic lethal, abnormal vision, <i>Drosophila</i>)-like 2 (Hu antigen B)

Product information

Purification method:	Antigen affinity purification
Storage:	PBS with 0.02% sodium azide and 50% glycerol pH 7.3. Store at -20°C.

(IP:14008-1-AP, 4ug;
Detection:14008-1-AP 1:1000)
with mouse cerebellum tissue
lysate 4400ug.