

LYNX1 Polyclonal Antibody

Catalog number: 13373-1-AP

Size: 41 µg/150 µl

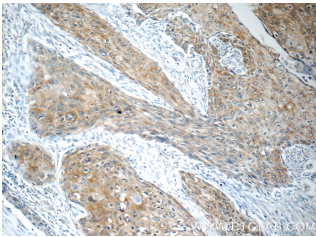
Source: Rabbit

Isotype: IgG

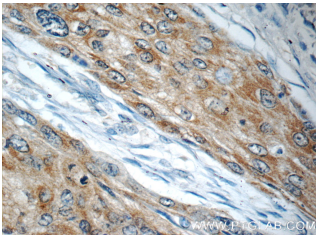
Synonyms:

LYNX1; Ly6/neurotoxin 1,

LYNX1, SLURP 2, SLURP2



Immunohistochemistry of paraffin-embedded human oesophagus cancer tissue slide using 13373-1-AP (LYNX1 Antibody) at dilution of 1:50 (under 10x lens)



Immunohistochemistry of paraffin-embedded human oesophagus cancer tissue slide using 13373-1-AP (LYNX1 Antibody) at dilution of 1:50 (under 40x lens)

Background

LYNX1, also named as SLURP2, is a neuronal membrane molecule related to snake a-neurotoxins able to modulate nicotinic acetylcholine receptors (nAChRs). It acts in different tissues through interaction to nAChRs to balance neuronal activity.

Applications

Tested applications:	ELISA, IHC
Species specificity:	Human, Mouse, Rat; other species not tested.
Calculated LYNX1 MW:	131aa, 14 kDa
Observed LYNX1 MW:	
Positive IHC detected in	Human oesophagus cancer tissue, human oesophagus tissue, mouse brain tissue
Recommended dilution:	IHC: 1:20-1:200

Application key: WB = Western blotting, IHC = Immunohistochemistry, IF = Immunofluorescence, IP = Immunoprecipitation

Immunogen information

Immunogen:	Ag4195
GenBank accession number:	BC032306
Gene ID (NCBI):	66004
Full name:	Ly6/neurotoxin 1

Product information

Purification method:	Antigen affinity purification
Storage:	PBS with 0.1% sodium azide and 50% glycerol pH 7.3. Store at -20°C.