

STAT3 Polyclonal Antibody

Catalog number: 10253-2-AP

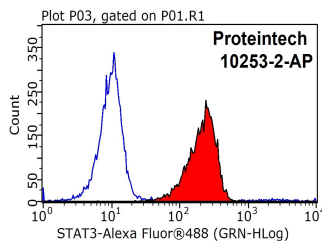
Size: 44 µg/150 µl

Source: Rabbit

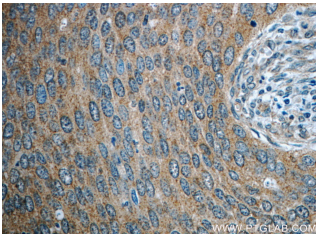
Isotype: IgG

Synonyms:

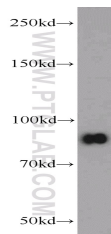
STAT3; Acute phase response factor, APRF, FLJ20882, HIES, STAT3



1X10⁶ HeLa cells were stained with 0.2µg STAT3 antibody (10253-2-AP, red) and control antibody (blue). Fixed with 90% MeOH blocked with 3% BSA (30 min). Alexa Fluor 488-conjugated AffiniPure Goat Anti-Rabbit IgG(H+L) with dilution 1:1000.



Immunohistochemistry of paraffin-embedded human cervical cancer slide using 10253-2-AP(STAT3 Antibody) at dilution of 1:50



HeLa cells were subjected to SDS PAGE followed by western blot with 10253-2-AP(STAT3 antibody) at dilution of 1:4000

Background

Signal transducer and activator of transcription 3 (acute-phase response factor) (STAT3, synonyms: APRF, FLJ20882, MGC16063) is a member of the STAT protein family. In response to cytokines and growth factors, STAT family members are phosphorylated by the receptor associated kinases, and then form homo- or heterodimers that translocate to the cell nucleus where they act as transcription activators. STAT3 is activated through phosphorylation in response to various cytokines and growth factors including IFNs, EGF, IL5, IL6, HGF, LIF and BMP2. STAT3 mediates the expression of a variety of genes in response to cell stimuli, and thus plays a key role in many cellular processes such as cell growth and apoptosis. The small GTPase Rac1 has been shown to bind and regulate the activity of STAT3. This antibody is a rabbit polyclonal antibody raised against residues near the N terminus of human STAT3.

Applications

Tested applications:	ELISA, WB, IHC, IF, FC, IP
Cited applications:	WB
Species specificity:	Human, Mouse, Rat; other species not tested.
Cited species:	Human
Calculated STAT3 MW:	770aa, 88 kDa
Observed STAT3 MW:	88 kDa
Positive WB detected in	HeLa cells, A431 cells, A549 cells, Jurkat cells, K-562 cells, MCF7 cells, mouse brain tissue, mouse heart tissue, mouse lung tissue, mouse thymus tissue, NIH/3T3 cells, rat brain tissue
Positive IP detected in	HeLa cells
Positive IHC detected in	Human cervical cancer tissue, human breast cancer tissue
Positive IF detected in	HeLa cells
Positive FC detected in	HeLa cells
Recommended dilution:	WB: 1:1000-1:10000 IP: 1:1000-1:10000 IHC: 1:20-1:200 IF: 1:10-1:100 FC: N/A

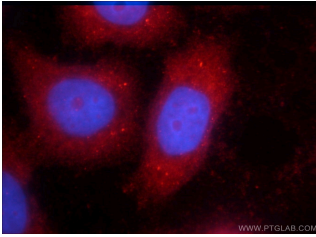
Application key: WB = Western blotting, IHC = Immunohistochemistry, IF = Immunofluorescence, IP = Immunoprecipitation

Immunogen information

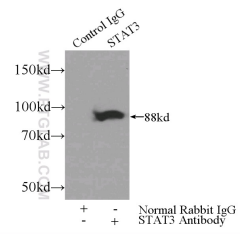
Immunogen:	Ag0360
GenBank accession number:	BC000627
Gene ID (NCBI):	6774
Full name:	Signal transducer and activator of transcription 3 (acute-phase response factor)

Product information

Purification method:	Antigen affinity purification
Storage:	PBS with 0.1% sodium azide and 50% glycerol pH 7.3. Store at -20°C.



Immunofluorescent analysis of HeLa cells using 10253-2-AP(STAT3 Antibody) at dilution of 1:25 and Rhodamine-Goat anti-Rabbit IgG



IP Result of anti-STAT3 (IP:10253-2-AP, 3ug; Detection:10253-2-AP 1:2000) with HeLa cells lysate 3000ug.