

GREM2 Polyclonal Antibody

Catalog number: 13892-1-AP

Size: 89 µg/150 µl

Source: Rabbit

Isotype: IgG

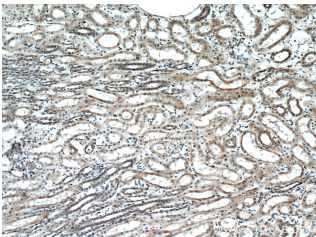
Synonyms:

GREM2; CKTSF1B2, DAN

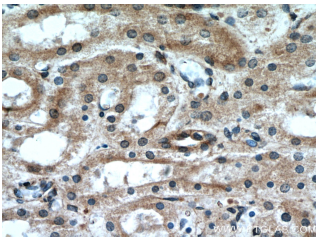
domain family member 3,

DAND3, GREM2, Gremlin 2,

PRDC



Immunohistochemical of paraffin-embedded human kidney using 13892-1-AP(GREM2 antibody) at dilution of 1:50 (under 10x lens)



Immunohistochemical of paraffin-embedded human kidney using 13892-1-AP(GREM2 antibody) at dilution of 1:50 (under 40x lens)

Applications

Tested applications:	ELISA, IHC
Cited applications:	IHC, WB
Species specificity:	Human, Mouse; other species not tested.
Cited species:	Mouse
Calculated GREM2 MW:	168aa,19 kDa
Observed GREM2 MW:	
Positive IHC detected in	Human kidney tissue, human ovary tissue
Recommended dilution:	IHC: 1:20-1:200

Application key: WB = Western blotting, IHC = Immunohistochemistry, IF = Immunofluorescence, IP = Immunoprecipitation

Immunogen information

Immunogen:	Ag4854
GenBank accession number:	BC046632
Gene ID (NCBI):	64388
Full name:	Gremlin 2, cysteine knot superfamily, homolog (Xenopus laevis)

Product information

Purification method:	Antigen affinity purification
Storage:	PBS with 0.1% sodium azide and 50% glycerol pH 7.3. Store at -20°C.