

ubiquitin Polyclonal Antibody

Catalog number: 10201-2-AP

Size: 26 µg/150 µl

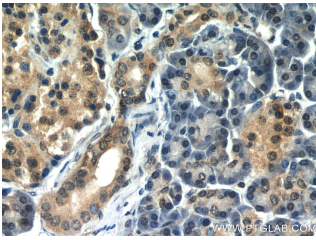
Source: Rabbit

Isotype: IgG

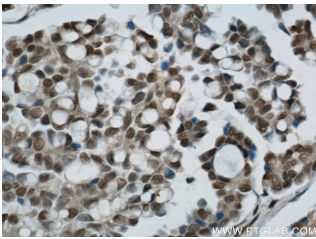
Synonyms:

UBB; FLJ25987, Polyubiquitin B,

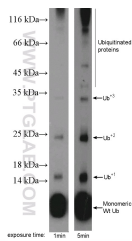
UBB, ubiquitin, ubiquitin B



Immunohistochemical of paraffin-embedded human pancreas using 10201-2-AP(ubiquitin antibody) at dilution of 1:50 (under 40x lens)



Immunohistochemical of paraffin-embedded human ovary tumor using 10201-2-AP(ubiquitin antibody) at dilution of 1:50 (under 40x lens)



MDA-MB-453s cells were subjected to SDS PAGE followed by western blot with 10201-2-AP(ubiquitin Antibody) at dilution of 1:600

Background

Ubiquitin B (UBB) is a member of ubiquitin family, one of the most conserved proteins known. Ubiquitin B is required for ATP-dependent, non-lysosomal intracellular protein degradation of abnormal proteins and normal proteins with a rapid turnover. Ubiquitin B is covalently bound to proteins to be degraded, and presumably labels these proteins for degradation. Ubiquitin also binds to histone H2A in actively transcribed regions but does not cause histone H2A degradation, suggesting that ubiquitin is also involved in regulation of gene expression. When polyubiquitin is free (unanchored-polyubiquitin), it also has distinct roles, such as in activation of protein kinases, and in signaling. This gene consists of three direct repeats of the ubiquitin coding sequence with no spacer sequence. Consequently, the protein is expressed as a polyubiquitin precursor with a final amino acid after the last repeat. Aberrant form of this protein has been noticed in patients with Alzheimer's and Down syndrome. Interestingly ubiquitin also becomes covalently bonded to many types of pathological inclusions which appear to be resistant to normal degradation.

Applications

Tested applications:	ELISA, IHC, IP, WB
Cited applications:	IHC, IP, WB
Species specificity:	Human, Mouse, Rat; other species not tested.
Cited species:	Human
Calculated ubiquitin MW:	26 kDa
Observed ubiquitin MW:	8 kDa, 24 kDa
Positive WB detected in	MDA-MB-453s cells, HeLa cells, MCF7 cells, mouse liver tissue
Positive IP detected in	Mouse liver tissue
Positive IHC detected in	Human pancreas tissue, human ovary tumor tissue
Recommended dilution:	WB: 1:200-1:2000 IP: 1:200-1:1000 IHC: 1:20-1:200

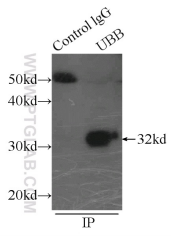
Application key: WB = Western blotting, IHC = Immunohistochemistry, IF = Immunofluorescence, IP = Immunoprecipitation

Immunogen information

Immunogen:	Ag0260
GenBank accession number:	BC000379
Gene ID (NCBI):	7314
Full name:	Ubiquitin B

Product information

Purification method:	Antigen affinity purification
Storage:	PBS with 0.1% sodium azide and 50% glycerol pH 7.3. Store at -20°C.



IP Result of anti-ubiquitin
(IP:10201-2-AP, 3ug;
Detection:10201-2-AP 1:300)
with mouse liver tissue lysate
5000ug.