

PIWIL2 Polyclonal Antibody

Catalog number: 14209-1-AP

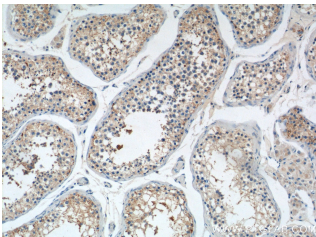
Size: 29 µg/150 µl

Source: Rabbit

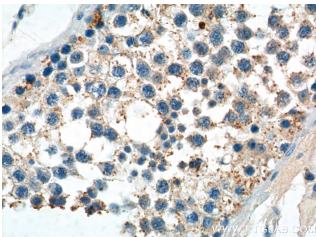
Isotype: IgG

Synonyms:

PIWIL2; Cancer/testis antigen
80, CT80, FLJ10351, HILL, mili,
piwi like 2 (Drosophila), Piwi
like protein 2, PIWIL1L, PIWIL2



Immunohistochemistry of paraffin-embedded human testis tissue slide using 14209-1-AP (PIWIL2 Antibody) at dilution of 1:50 (under 10x lens)



Immunohistochemistry of paraffin-embedded human testis tissue slide using 14209-1-AP (PIWIL2 Antibody) at dilution of 1:50 (under 40x lens)

Applications

Tested applications:	ELISA, IHC
Species specificity:	Human, Mouse, Rat; other species not tested.
Calculated PIWIL2 MW:	110 kDa
Observed PIWIL2 MW:	
Positive IHC detected in	Human testis tissue, human cervical cancer tissue
Recommended dilution:	IHC: 1:20-1:200

Application key: WB = Western blotting, IHC = Immunohistochemistry, IF = Immunofluorescence, IP = Immunoprecipitation

Immunogen information

Immunogen:	Ag5423
GenBank accession number:	BC025995
Gene ID (NCBI):	55124
Full name:	Piwi-like 2 (Drosophila)

Product information

Purification method:	Antigen affinity purification
Storage:	PBS with 0.1% sodium azide and 50% glycerol pH 7.3. Store at -20°C.