

## IGHM Polyclonal Antibody

Catalog number: 11016-1-AP

Size: 20 µg/150 µl

Source: Rabbit

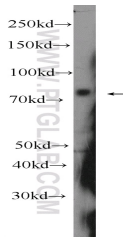
Isotype: IgG

Synonyms:

IGHM; DKFZp686I15196,

DKFZp686I15212, FLJ00385,

IGHM, MU, VH



human plasma tissue were subjected to SDS PAGE followed by western blot with 11016-1-AP( IGHM Antibody) at dilution of 1:300

### Applications

Tested applications:	ELISA, WB
Species specificity:	Human; other species not tested.
Calculated IGHM MW:	69kd
Observed IGHM MW:	75 kDa
Positive WB detected in	Human plasma tissue
Recommended dilution:	WB: 1:200-1:1000

Application key: WB = Western blotting, IHC = Immunohistochemistry, IF = Immunofluorescence, IP = Immunoprecipitation

### Immunogen information

Immunogen:	Ag1459
GenBank accession number:	BC009851
Gene ID (NCBI):	3507
Full name:	Immunoglobulin heavy constant mu

### Product information

Purification method:	Antigen affinity purification
Storage:	PBS with 0.1% sodium azide and 50% glycerol pH 7.3. Store at -20°C.