

SRPR Polyclonal Antibody

Catalog number: 12090-1-AP

Size: 20 µg/150 µl

Source: Rabbit

Isotype: IgG

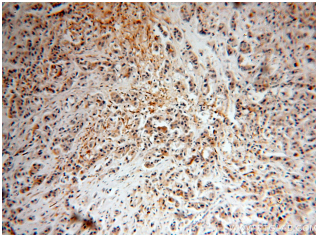
Synonyms:

SRPR; Docking protein alpha,

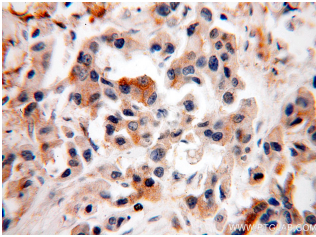
DP, DP alpha, SR alpha,

Sralpha, SRP alpha, SRPR,

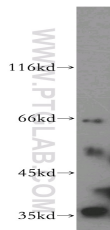
SRPR alpha



Immunohistochemical of paraffin-embedded human breast cancer using 12090-1-AP (SRPR antibody) at dilution of 1:50 (under 10x lens)



Immunohistochemical of paraffin-embedded human breast cancer using 12090-1-AP (SRPR antibody) at dilution of 1:50 (under 40x lens)



mouse liver tissue were subjected to SDS PAGE followed by western blot with 12090-1-AP (SRPR antibody) at dilution of 1:500

Applications

| | |
|---------------------------|--|
| Tested applications: | ELISA, WB, IHC |
| Species specificity: | Human, Mouse, Rat; other species not tested. |
| Calculated SRPR MW: | 638aa, 70 kDa |
| Observed SRPR MW: | 65-70kd |
| Positive WB detected in: | Mouse liver tissue |
| Positive IHC detected in: | Human breast cancer tissue |
| Recommended dilution: | WB: 1:500-1:5000 IHC: 1:20-1:200 |

Application key: WB = Western blotting, IHC = Immunohistochemistry, IF = Immunofluorescence, IP = Immunoprecipitation

Immunogen information

| | |
|---------------------------|--|
| Immunogen: | Ag2730 |
| GenBank accession number: | BC013583 |
| Gene ID (NCBI): | 6734 |
| Full name: | Signal recognition particle receptor (docking protein) |

Product information

| | |
|----------------------|--|
| Purification method: | Antigen affinity purification |
| Storage: | PBS with 0.02% sodium azide and 50% glycerol pH 7.3. Store at -20°C. |