

## Dystrophin Polyclonal Antibody

Catalog number: 12715-1-AP

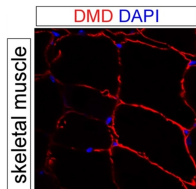
Size: 37 µg/150 µl

Source: Rabbit

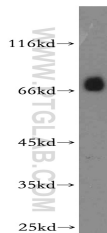
Isotype: IgG

Synonyms:

DMD; BMD, CMD3B, DMD,  
DXS142, DXS164, DXS206,  
DXS230, DXS239, DXS268,  
DXS269, DXS270, DXS272,  
dystrophin



IF result of anti-DMD (12715-1-AP, 1:500) with PFA fixed mouse skeletal muscle tissue by Dr. Daniel Kopinke.



mouse brain tissue were subjected to SDS PAGE followed by western blot with 12715-1-AP(DMD antibody) at dilution of 1:1500



Immunohistochemistry of paraffin-embedded human skeletal muscle tissue slide using 12715-1-AP( DMD Antibody) at dilution of 1:100 (under 10x lens).



### Applications

Tested applications:	ELISA, WB, IF, IP, IHC
Species specificity:	Human, Mouse, Rat; other species not tested.
Calculated Dystrophin MW:	635aa, 72 kDa
Observed Dystrophin MW:	70 kDa
Positive WB detected in	Mouse brain tissue, human testis tissue, mouse lung tissue
Positive IP detected in	Mouse brain tissue
Positive IHC detected in	Human skeletal muscle tissue, human heart tissue
Positive IF detected in	Mouse skeletal muscle tissue
Recommended dilution:	WB: 1:500-1:5000 IP: 1:500-1:5000 IHC: 1:20-1:200 IF: 1:20-1:200

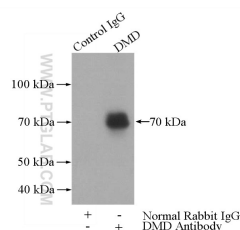
Application key: WB = Western blotting, IHC = Immunohistochemistry, IF = Immunofluorescence, IP = Immunoprecipitation

### Immunogen information

Immunogen:	Ag3408
GenBank accession number:	BC028720
Gene ID (NCBI):	1756
Full name:	Dystrophin

### Product information

Purification method:	Antigen affinity purification
Storage:	PBS with 0.02% sodium azide and 50% glycerol pH 7.3. Store at -20°C.



**Immunohistochemistry of  
paraffin-embedded human  
skeletal muscle tissue slide  
using 12715-1-AP( DMD  
Antibody) at dilution of 1:100  
(under 40x lens).**

**IP Result of anti-DMD  
(IP:12715-1-AP, 4ug;  
Detection:12715-1-AP 1:1500)  
with mouse brain tissue lysate  
3440ug.**