

Maspin Polyclonal Antibody

Catalog number: 11722-1-AP

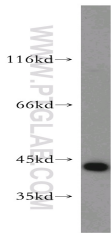
Size: 22 µg/150 µl

Source: Rabbit

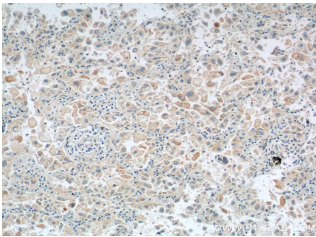
Isotype: IgG

Synonyms:

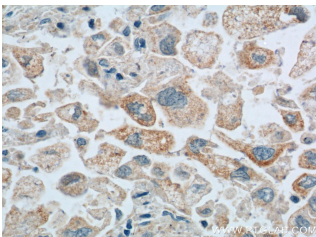
SERPINB5; maspin, Peptidase inhibitor 5, PI 5, PI5, Serpin B5, SERPINB5, SPB5



HepG2 cells were subjected to SDS PAGE followed by western blot with 11722-1-AP(SERPINB5 antibody) at dilution of 1:500



Immunohistochemistry of paraffin-embedded human lung cancer tissue slide using 11722-1-AP(SERPINB5 Antibody) at dilution of 1:200 (under 10x lens). heat mediated antigen retrieved with Tris-EDTA buffer(pH9).



Immunohistochemistry of paraffin-embedded human lung cancer tissue slide using 11722-1-AP(SERPINB5 Antibody) at dilution of 1:200 (under 40x lens). heat mediated antigen retrieved with Tris-EDTA buffer(pH9).

Background

SERPINB5, also named as PI-5, Maspin and Serpin B5, belongs to the serpin family and Ov-serpin subfamily. It is a tumor suppressor. It blocks the growth, invasion, and metastatic properties of mammary tumors. As it does not undergo the S (stressed) to R (relaxed) conformational transition characteristic of active serpins, SERPINB5 exhibits no serine protease inhibitory activity.

Applications

Tested applications:	ELISA, WB, IHC
Cited applications:	IHC, WB
Species specificity:	Human, Mouse, Rat; other species not tested.
Cited species:	Human
Calculated Maspin MW:	375aa, 42 kDa
Observed Maspin MW:	42 kDa
Positive WB detected in	HepG2 cells, A431 cells, HeLa cells
Positive IHC detected in	Human lung cancer tissue, human breast cancer tissue
Recommended dilution:	WB: 1:500-1:5000 IHC: 1:50-1:500

Application key: WB = Western blotting, IHC = Immunohistochemistry, IF = Immunofluorescence, IP = Immunoprecipitation

Immunogen information

Immunogen:	Ag2304
GenBank accession number:	BC020713
Gene ID (NCBI):	5268
Full name:	Serpin peptidase inhibitor, clade B (ovalbumin), member 5

Product information

Purification method:	Antigen affinity purification
Storage:	PBS with 0.02% sodium azide and 50% glycerol pH 7.3. Store at -20°C.