

TIMM10 Polyclonal Antibody

Catalog number: 11124-2-AP

Size: 20 µg/150 µl

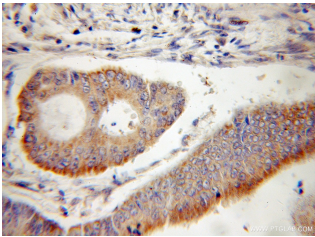
Source: Rabbit

Isotype: IgG

Synonyms:

TIMM10; TIM10, TIM10A,

TIMM10



Immunohistochemical of paraffin-embedded human colon cancer using 11124-2-AP(TIMM10 antibody) at dilution of 1:50 (under 25x lens)



human heart tissue were subjected to SDS PAGE followed by western blot with 11124-2-AP(TIMM10 antibody) at dilution of 1:500

Applications

Tested applications:	ELISA, WB, IHC
Cited applications:	WB
Species specificity:	Human, Mouse, Rat; other species not tested.
Cited species:	Human
Calculated TIMM10 MW:	10 kDa
Observed TIMM10 MW:	10 kDa
Positive WB detected in	Human heart tissue, human liver tissue
Positive IHC detected in	Human colon cancer tissue
Recommended dilution:	WB: 1:500-1:5000 IHC: 1:20-1:200

Application key: WB = Western blotting, IHC = Immunohistochemistry, IF = Immunofluorescence, IP = Immunoprecipitation

Immunogen information

Immunogen:	Ag1615
GenBank accession number:	BC032133
Gene ID (NCBI):	26519
Full name:	Translocase of inner mitochondrial membrane 10 homolog (yeast)

Product information

Purification method:	Antigen affinity purification
Storage:	PBS with 0.1% sodium azide and 50% glycerol pH 7.3. Store at -20°C.