

ADAM2 Polyclonal Antibody

Catalog number: 13952-1-AP

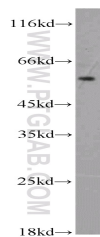
Size: 20 µg/150 µl

Source: Rabbit

Isotype: IgG

Synonyms:

ADAM2; ADAM 2, ADAM metallopeptidase domain 2, ADAM2, Cancer/testis antigen 15, CRYN1, CRYN2, CT15, Fertilin subunit beta, FTNB, PH 30, PH 30b, PH30, PH30 beta



mouse testis tissue were subjected to SDS PAGE followed by western blot with 13952-1-AP(ADAM2 antibody) at dilution of 1:1000

Background

Members of the ADAM (a disintegrin and metalloprotease) family are multifunctional, transmembranous proteins consisting of pro-, metalloprotease, disintegrin, cysteine-rich, epidermal growth factor-like, transmembrane, and cytoplasmic tail domains. Fertilin, a heterodimeric protein complex composed of a(ADAM1) and b(ADAM2) subunits present on the sperm surface, has been believed to mediate adhesion and fusion between the sperm and egg plasma membranes. ADAM2-deficient mouse sperm is also defective in adhesion to and fusion with the egg membrane (PMID:16407235). It has 2 isoforms produced by alternative splicing and 5 glycosylation sites.

Applications

Tested applications:	ELISA, WB
Species specificity:	Human, Mouse; other species not tested.
Calculated ADAM2 MW:	82 kDa
Observed ADAM2 MW:	50-55 kDa, 65-75 kDa
Positive WB detected in	Mouse testis tissue, human testis tissue
Recommended dilution:	WB: 1:500-1:5000

Application key: WB = Western blotting, IHC = Immunohistochemistry, IF = Immunofluorescence, IP = Immunoprecipitation

Immunogen information

Immunogen:	Ag5063
GenBank accession number:	BC034957
Gene ID (NCBI):	2515
Full name:	ADAM metallopeptidase domain 2

Product information

Purification method:	Antigen affinity purification
Storage:	PBS with 0.1% sodium azide and 50% glycerol pH 7.3. Store at -20°C.