

EAAT3 Polyclonal Antibody

Catalog number: 12686-1-AP

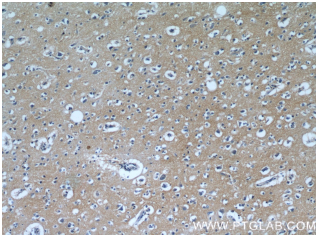
Size: 27 µg/150 µl

Source: Rabbit

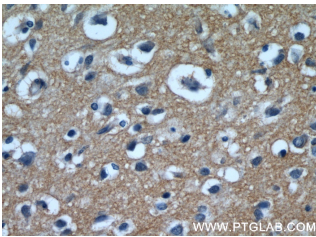
Isotype: IgG

Synonyms:

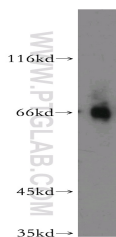
SLC1A1; EAAC1, EAAT3, SLC1A1



Immunohistochemical of paraffin-embedded human brain using 12686-1-AP(SLC1A1 antibody) at dilution of 1:50 (under 10x lens)



Immunohistochemical of paraffin-embedded human brain using 12686-1-AP(SLC1A1 antibody) at dilution of 1:50 (under 40x lens)



mouse ovary tissue were subjected to SDS PAGE followed by western blot with 12686-1-AP(SLC1A1 antibody) at dilution of 1:500

Applications

Tested applications:	ELISA, WB, IHC
Species specificity:	Human, Mouse, Rat; other species not tested.
Calculated EAAT3 MW:	524aa, 57 kDa
Observed EAAT3 MW:	66 kDa
Positive WB detected in	Mouse ovary tissue, human brain tissue, mouse testis tissue
Positive IHC detected in	Human brain tissue, human testis tissue
Recommended dilution:	WB: 1:200-1:2000 IHC: 1:20-1:200

Application key: WB = Western blotting, IHC = Immunohistochemistry, IF = Immunofluorescence, IP = Immunoprecipitation

Immunogen information

Immunogen:	Ag3379
GenBank accession number:	BC033040
Gene ID (NCBI):	6505
Full name:	Solute carrier family 1 (neuronal/epithelial high affinity glutamate transporter, system Xag), member 1

Product information

Purification method:	Antigen affinity purification
Storage:	PBS with 0.02% sodium azide and 50% glycerol pH 7.3. Store at -20°C.