

ARSB Polyclonal Antibody

Catalog number: 13227-1-AP

Size: 20 µg/150 µl

Source: Rabbit

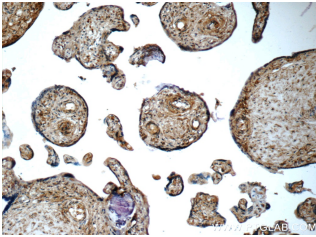
Isotype: IgG

Synonyms:

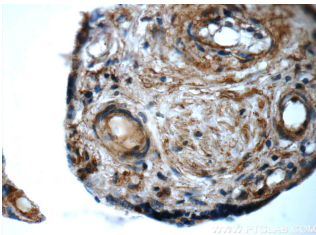
ARSB; ARSB, arylsulfatase B,
ASB, G4S, MPS6



HepG2 cells were subjected to SDS PAGE followed by western blot with 13227-1-AP (ARSB antibody) at dilution of 1:300



Immunohistochemistry of paraffin-embedded human placenta tissue slide using 13227-1-AP (ARSB Antibody) at dilution of 1:50 (under 10x lens)



Immunohistochemistry of paraffin-embedded human placenta tissue slide using 13227-1-AP (ARSB Antibody) at dilution of 1:50 (under 40x lens)

Applications

Tested applications:	ELISA, WB, IHC
Species specificity:	Human, Mouse, Rat; other species not tested.
Calculated ARSB MW:	413aa, 46 kDa
Observed ARSB MW:	44kd
Positive WB detected in:	HepG2 cells
Positive IHC detected in:	Human placenta tissue, human breast cancer tissue, human heart tissue
Recommended dilution:	WB: 1:200-1:2000 IHC: 1:20-1:200

Application key: WB = Western blotting, IHC = Immunohistochemistry, IF = Immunofluorescence, IP = Immunoprecipitation

Immunogen information

Immunogen:	Ag4083
GenBank accession number:	BC029051
Gene ID (NCBI):	411
Full name:	Arylsulfatase B

Product information

Purification method:	Antigen affinity purification
Storage:	PBS with 0.02% sodium azide and 50% glycerol pH 7.3. Store at -20°C.