

## GPR116 Polyclonal Antibody

Catalog number: 14047-1-AP

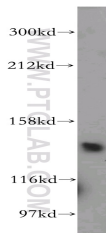
Size: 20 µg/150 µl

Source: Rabbit

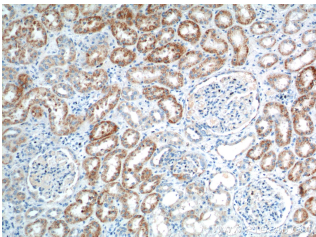
Isotype: IgG

Synonyms:

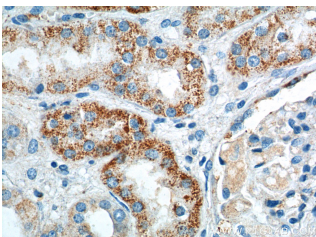
GPR116; DKFZp564O1923,  
FLJ90640, G protein coupled  
receptor 116, GPR116,  
KIAA0758, KPG\_001



Y79 cells were subjected to SDS PAGE followed by western blot with 14047-1-AP (GPR116 antibody) at dilution of 1:300



Immunohistochemistry of paraffin-embedded human kidney tissue slide using 14047-1-AP (GPR116 Antibody) at dilution of 1:100 (under 10x lens).



Immunohistochemistry of paraffin-embedded human kidney tissue slide using 14047-1-AP (GPR116 Antibody) at dilution of 1:100 (under 40x lens).

### Applications

|                           |                                              |
|---------------------------|----------------------------------------------|
| Tested applications:      | ELISA, WB, IHC                               |
| Species specificity:      | Human, Mouse, Rat; other species not tested. |
| Calculated GPR116 MW:     | 1346aa, 149 kDa                              |
| Observed GPR116 MW:       | 149 kDa                                      |
| Positive WB detected in:  | Y79 cells                                    |
| Positive IHC detected in: | Human kidney tissue                          |
| Recommended dilution:     | WB: 1:200-1:2000<br>IHC: 1:50-1:500          |

Application key: WB = Western blotting, IHC = Immunohistochemistry, IF = Immunofluorescence, IP = Immunoprecipitation

### Immunogen information

|                           |                                |
|---------------------------|--------------------------------|
| Immunogen:                | Ag5214                         |
| GenBank accession number: | BC066121                       |
| Gene ID (NCBI):           | 221395                         |
| Full name:                | G protein-coupled receptor 116 |

### Product information

|                      |                                                                      |
|----------------------|----------------------------------------------------------------------|
| Purification method: | Antigen affinity purification                                        |
| Storage:             | PBS with 0.02% sodium azide and 50% glycerol pH 7.3. Store at -20°C. |