

## TAK1 Polyclonal Antibody

Catalog number: 12330-2-AP

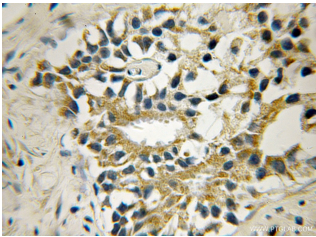
Size: 43 µg/150 µl

Source: Rabbit

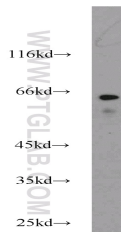
Isotype: IgG

Synonyms:

MAP3K7; MAP3K7, TAK1, TGF  
beta activated kinase 1, TGF1a



Immunohistochemical of paraffin-embedded human prostate cancer using 12330-2-AP (MAP3K7 antibody) at dilution of 1:50 (under 10x lens)



CHO cells were subjected to SDS PAGE followed by western blot with 12330-2-AP (MAP3K7 antibody) at dilution of 1:1000

### Background

MAP3K7 (Mitogen-activated protein kinase kinase kinase 7) is also named as TAK1 and belongs to the MAP kinase kinase kinase subfamily. It plays an important role in the cascades of cellular responses evoked by changes in the environment. It has been linked to interleukin-1 receptor and tumor necrosis factor receptor signaling (PMID: 16186825). It has 4 isoforms (53055 kDa; 64-70 kDa and 75-80 kDa) produced by alternative splicing.

### Applications

Tested applications:	ELISA, IHC, WB
Cited applications:	WB
Species specificity:	Human, hamster, Mouse; other species not tested.
Cited species:	Human
Calculated TAK1 MW:	579aa, 64 kDa
Observed TAK1 MW:	64 kDa
Positive WB detected in	CHO cells, A2780 cells, A375 cells, A431 cells, COLO 320 cells, HeLa cells, K-562 cells, MCF7 cells, mouse heart tissue, SKOV-3 cells
Positive IHC detected in	Human prostate cancer tissue
Recommended dilution:	WB: 1:500-1:5000 IHC: 1:20-1:200

Application key: WB = Western blotting, IHC = Immunohistochemistry, IF = Immunofluorescence, IP = Immunoprecipitation

### Immunogen information

Immunogen:	Ag3041
GenBank accession number:	BC017715
Gene ID (NCBI):	6885
Full name:	Mitogen-activated protein kinase kinase kinase 7

### Product information

Purification method:	Antigen affinity purification
Storage:	PBS with 0.1% sodium azide and 50% glycerol pH 7.3. Store at -20°C.