

PIGF Polyclonal Antibody

Catalog number: 10642-1-AP

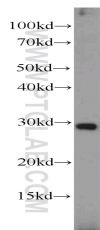
Size: 37 µg/150 µl

Source: Rabbit

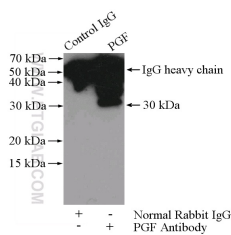
Isotype: IgG

Synonyms:

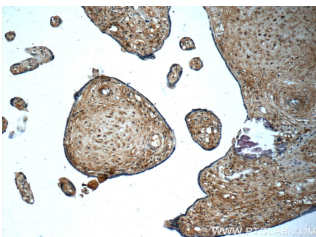
PGF; D12S1900, PGF, PGFL,
PIGF, Placenta growth factor,
placental growth factor, PLGF,
PIGF 2, SHGC 10760



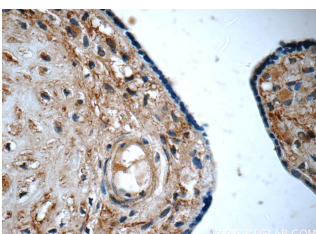
MCF7 cells were subjected to SDS PAGE followed by western blot with 10642-1-AP (PGF antibody) at dilution of 1:300



IP Result of anti-PGF (IP:10642-1-AP, 4µg; Detection:10642-1-AP 1:500) with human placenta tissue lysate 4400µg.



Immunohistochemistry of paraffin-embedded human placenta tissue slide using 10642-1-AP (PGF Antibody) at dilution of 1:50 (under 10x lens)



Immunohistochemistry of

Background

PLGF (placental growth factor) is a member of the vascular endothelial growth factor (VEGF) family. It plays an important role in pathological VEGF-driven angiogenesis. PLGF is expressed not only in placental cells but also in colon and mammary carcinomas. It acts as a primary inflammatory instigator of atherosclerotic plaque instability and thus may be useful as a risk-predicting biomarker in patients with acute coronary syndromes (ACS).

Applications

Tested applications:	ELISA, WB, IHC, IP
Cited applications:	IF
Species specificity:	Human; other species not tested.
Cited species:	Rat
Calculated PIGF MW:	25 kDa
Observed PIGF MW:	25-30 kDa
Positive WB detected in	MCF7 cells
Positive IP detected in	Human placenta tissue
Positive IHC detected in	Human placenta tissue, human breast cancer tissue, human meningioma tissue
Recommended dilution:	WB: 1:200-1:2000
	IP: 1:200-1:2000
	IHC: 1:20-1:200

Application key: WB = Western blotting, IHC = Immunohistochemistry, IF = Immunofluorescence, IP = Immunoprecipitation

Immunogen information

Immunogen:	Ag0969
GenBank accession number:	BC007789
Gene ID (NCBI):	5228
Full name:	Placental growth factor

Product information

Purification method:	Antigen affinity purification
Storage:	PBS with 0.1% sodium azide and 50% glycerol pH 7.3. Store at -20°C.

paraffin-embedded human
placenta tissue slide using
10642-1-AP (PGF Antibody)
at dilution of 1:50 (under 40x
lens)