

AP3M2 Polyclonal Antibody

Catalog number: 11925-1-AP

Size: 22 µg/150 µl

Source: Rabbit

Isotype: IgG

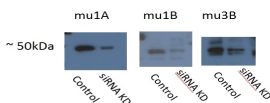
Synonyms:

AP3M2; AP 3 complex subunit

mu 2, AP3M2, AP47B, CLA20,

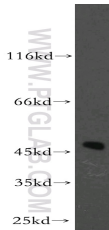
HA1 47 kDa subunit homolog 2,

Mu3B adaptin, P47B

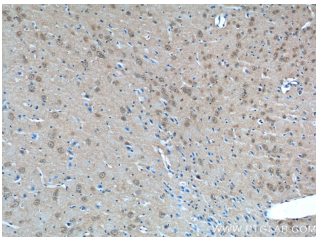


AP1M1 is mu1A: 12112-1-AP,
AP1M2 is mu1B: 10618-1-AP,
AP3M2 is mu3B: 11925-1-AP,
acceptable bands ~50 kDa showing
some degree of siRNA
knockdown

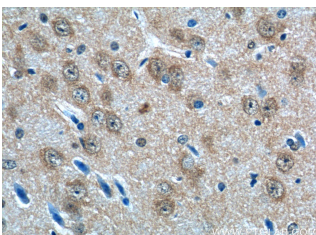
**WB result of AP3M2 antibody
(11925-1-AP; 1:500) with siRNA cell
lysate.**



human brain tissue were subjected to
SDS PAGE followed by western blot
with 11925-1-AP(AP3M2 antibody) at
dilution of 1:200



**Immunohistochemistry of paraffin-
embedded mouse brain tissue slide
using 11925-1-AP(AP3M2 Antibody)
at dilution of 1:50 (under 10x lens)**



**Immunohistochemistry of
paraffin-embedded mouse**

Background

AP3M2 is a 47-kDa protein that belongs to the adaptor complexes medium subunit family. Adaptor protein (AP) complexes are cytosolic heterotetramers that mediate the sorting of membrane proteins in the secretory and endocytic pathways. AP3M2 is a subunit of the AP-3 complex which is associated with the Golgi region as well as more peripheral structures. AP-3 is implicated in the transport of lysosomal membrane proteins.

Applications

Tested applications:	ELISA, WB, IHC
Species specificity:	Human, Mouse, Rat; other species not tested.
Calculated AP3M2 MW:	418aa, 47 kDa
Observed AP3M2 MW:	47 kDa
Positive WB detected in	Human brain tissue, Hacat cells (siRNA)
Positive IHC detected in	Mouse brain tissue
Recommended dilution:	WB: 1:200-1:2000
	IHC: 1:20-1:200

Application key: WB = Western blotting, IHC = Immunohistochemistry, IF = Immunofluorescence, IP = Immunoprecipitation

Immunogen information

Immunogen:	Ag2572
GenBank accession number:	BC056257
Gene ID (NCBI):	10947
Full name:	Adaptor-related protein complex 3, mu 2 subunit

Product information

Purification method:	Antigen affinity purification
Storage:	PBS with 0.02% sodium azide and 50% glycerol pH 7.3. Store at -20°C.

brain tissue slide using 11925-
1-AP (AP3M2 Antibody) at
dilution of 1:50 (under 40x
lens)