

## LDHD Polyclonal Antibody

Catalog number: 14398-1-AP

Size: 42 µg/150 µl

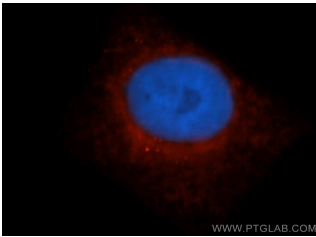
Source: Rabbit

Isotype: IgG

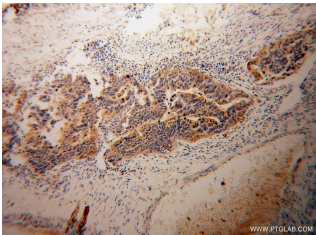
Synonyms:

LDHD; DLD, lactate

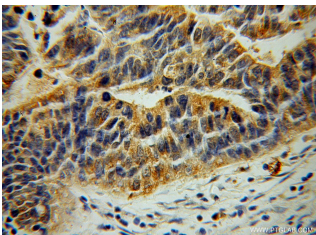
dehydrogenase D, LDHD



Immunofluorescent analysis of HepG2 cells, using LDHD antibody 14398-1-AP at 1:50 dilution and Rhodamine-labeled goat anti-rabbit IgG (red). Blue pseudocolor = DAPI (fluorescent DNA dye).



Immunohistochemical of paraffin-embedded human osteosarcoma using 14398-1-AP (LDHD antibody) at dilution of 1:50 (under 10x lens)



Immunohistochemical of paraffin-embedded human osteosarcoma using 14398-1-AP (LDHD antibody) at dilution of 1:50 (under 40x lens)

### Applications

Tested applications:	ELISA, WB, IHC, IF
Species specificity:	Human, Mouse; other species not tested.
Calculated LDHD MW:	52kd
Observed LDHD MW:	52kd and 54kd
Positive WB detected in	HepG2 cells, human heart tissue
Positive IHC detected in	Human osteosarcoma tissue
Positive IF detected in	HepG2 cells
Recommended dilution:	WB: 1:50 - 1:200 IHC: 1:25 - 1:100 IF: 1:25 - 1:100

Application key: WB = Western blotting, IHC = Immunohistochemistry, IF = Immunofluorescence, IP = Immunoprecipitation

### Immunogen information

Immunogen:	Ag5897
GenBank accession number:	BC047902
Gene ID (NCBI):	197257
Full name:	Lactate dehydrogenase D

### Product information

Purification method:	Antigen affinity purification
Storage:	PBS with 0.02% sodium azide and 50% glycerol pH 7.3. Store at -20°C.