

15 Lipoxygenase 2 Polyclonal Antibody

Catalog number: 13073-1-AP

Size: 20 µg/150 µl

Source: Rabbit

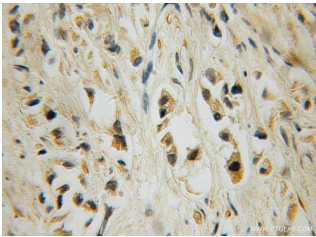
Isotype: IgG

Synonyms:

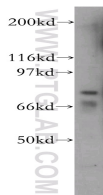
ALOX15B; 15 Lipoxygenase 2,

15 LOX 2, 15 LOX B, ALOX15B,

Arachidonate 15 lipoxygenase B



Immunohistochemical of paraffin-embedded human prostate cancer using 13073-1-AP (ALOX15B antibody) at dilution of 1:100 (under 10x lens)



MCF7 cells were subjected to SDS PAGE followed by western blot with 13073-1-AP (ALOX15B antibody) at dilution of 1:600

Applications

Tested applications:	ELISA, WB, IHC
Species specificity:	Human, Mouse, Rat; other species not tested.
Calculated 15 Lipoxygenase 2	676aa, 76kd
MW:	
Observed 15 Lipoxygenase 2	76kd
MW:	
Positive WB detected in	MCF7 cells, HEK-293 cells
Positive IHC detected in	Human prostate cancer tissue
Recommended dilution:	WB: 1:200-1:2000 IHC: 1:20-1:200

Application key: WB = Western blotting, IHC = Immunohistochemistry, IF = Immunofluorescence, IP = Immunoprecipitation

Immunogen information

Immunogen:	Ag3741
GenBank accession number:	BC035217
Gene ID (NCBI):	247
Full name:	Arachidonate 15-lipoxygenase, type B

Product information

Purification method:	Antigen affinity purification
Storage:	PBS with 0.1% sodium azide and 50% glycerol pH 7.3. Store at -20°C.