

## PPP2CA Polyclonal Antibody

Catalog number: 13482-1-AP

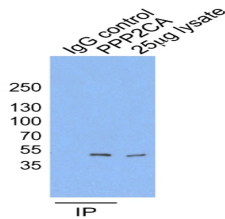
Size: 23 µg/150 µl

Source: Rabbit

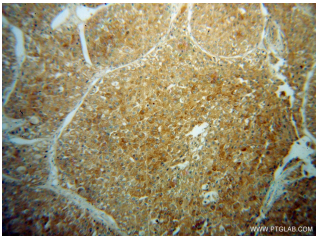
Isotype: IgG

Synonyms:

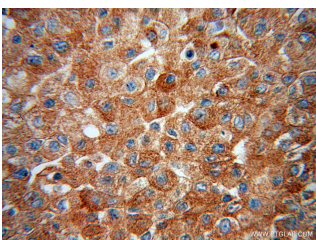
PPP2CA; PP2A alpha, PP2Ac, PP2CA, PPP2CA, Replication protein C, RP C



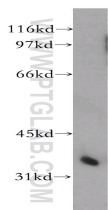
IP result of anti-PPP2CA (13482-1-AP for IP and Detection) with HeLa cells.



Immunohistochemical of paraffin-embedded human liver cancer using 13482-1-AP(PPP2CA antibody) at dilution of 1:50 (under 10x lens)



Immunohistochemical of paraffin-embedded human liver cancer using 13482-1-AP(PPP2CA antibody) at dilution of 1:50 (under 40x lens)



human liver tissue were subjected to SDS PAGE followed by western blot with 13482-1-AP(PPP2CA

### Background

PPP2CA, also named as RP-C and PP2A-alpha, belongs to the PPP phosphatase family and PP-1 subfamily. PP2A can modulate the activity of phosphorylase B kinase casein kinase 2, mitogen-stimulated S6 kinase, and MAP-2 kinase. PP2A activity was modestly decreased in AML patients harboring C-KIT/WT. PP2A is a target for C-KIT/TKD and implicated the potential efficacy of therapies targeting PP2A in such AML in future.

### Applications

Tested applications:	ELISA, WB, IHC, IP
Cited applications:	WB
Species specificity:	Human, Mouse, Rat; other species not tested.
Cited species:	Human
Calculated PPP2CA MW:	309aa, 36 kDa
Observed PPP2CA MW:	36 kDa
Positive WB detected in	Human liver tissue, Jurkat cells, MCF7 cells
Positive IP detected in	Hela cells, Jurkat cells
Positive IHC detected in	Human liver cancer tissue
Recommended dilution:	WB: 1:200-1:2000 IP: 1:200-1:2000 IHC: 1:20-1:200

Application key: WB = Western blotting, IHC = Immunohistochemistry, IF = Immunofluorescence, IP = Immunoprecipitation

### Immunogen information

Immunogen:	Ag4294
GenBank accession number:	BC031696
Gene ID (NCBI):	5515
Full name:	Protein phosphatase 2 (formerly 2A), catalytic subunit, alpha isoform

### Product information

Purification method:	Antigen affinity purification
Storage:	PBS with 0.02% sodium azide and 50% glycerol pH 7.3. Store at -20°C.

antibody) at dilution of 1:300