

## SOD3 Polyclonal Antibody

Catalog number: 14316-1-AP

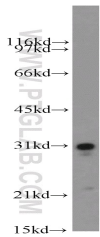
Size: 43 µg/150 µl

Source: Rabbit

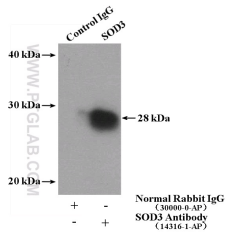
Isotype: IgG

Synonyms:

SOD3; EC SOD, Extracellular  
superoxide dismutase, SOD3,  
Superoxide Dismutase 3



human heart tissue were subjected to SDS PAGE followed by western blot with 14316-1-AP(SOD3 antibody) at dilution of 1:1000



IP Result of anti-SOD3 (IP:14316-1-AP, 4µg; Detection:14316-1-AP 1:1000) with human placenta tissue lysate 2800ug.

### Background

SOD is located intracellular (SOD-1; cytosolic, SOD-2; mitochondrial matrix) and extracellular (SOD-3), and catalyzes the dismutation of superoxide anion to H<sub>2</sub>O<sub>2</sub>. SOD3, or EC-SOD, is the most recently characterized SOD, exists as a copper and zinc-containing tetramer, and is synthesized containing a signal peptide that directs this enzyme exclusively to extracellular spaces. SOD-3 is a Mn-containing tetrameric protein with a subunit Mr of 24-35 kDa. The activity of EC-SOD is dependent on its ability to form a tetramer of 135 kDa.

### Applications

<b>Tested applications:</b>	ELISA, WB, IP
<b>Species specificity:</b>	Human; other species not tested.
<b>Calculated SOD3 MW:</b>	26 kDa
<b>Observed SOD3 MW:</b>	25-33 kDa
<b>Positive WB detected in</b>	Human heart tissue, human placenta tissue
<b>Positive IP detected in</b>	Human placenta tissue
<b>Recommended dilution:</b>	WB: 1:200-1:2000 IP: 1:500-1:5000

Application key: WB = Western blotting, IHC = Immunohistochemistry, IF = Immunofluorescence, IP = Immunoprecipitation

### Immunogen information

<b>Immunogen:</b>	Ag5556
<b>GenBank accession number:</b>	BC014418
<b>Gene ID (NCBI):</b>	6649
<b>Full name:</b>	Superoxide dismutase 3, extracellular

### Product information

<b>Purification method:</b>	Antigen affinity purification
<b>Storage:</b>	PBS with 0.1% sodium azide and 50% glycerol pH 7.3. Store at -20°C.