

## RAD9A Polyclonal Antibody

Catalog number: 13035-1-AP

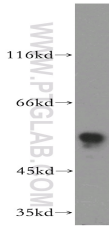
Size: 20 µg/150 µl

Source: Rabbit

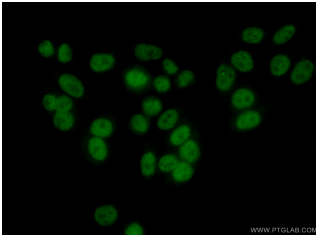
Isotype: IgG

Synonyms:

RAD9A; hRAD9, RAD9, RAD9 homolog A (*S. pombe*), RAD9A



HeLa cells were subjected to SDS PAGE followed by western blot with 13035-1-AP (RAD9A antibody) at dilution of 1:500



Immunofluorescent analysis of ( 10% Formaldehyde ) fixed HeLa cells using 13035-1-AP ( RAD9A Antibody) at dilution of 1:50 and Alexa Fluor 488-conjugated AffiniPure Goat Anti-Rabbit IgG(H+L)

### Applications

Tested applications:	ELISA, WB, IF
Species specificity:	Human, Mouse, Rat; other species not tested.
Calculated RAD9A MW:	391aa, 42 kDa
Observed RAD9A MW:	55-60 kDa
Positive WB detected in	HeLa cells, A549 cells, MCF7 cells
Positive IF detected in	HeLa cells
Recommended dilution:	WB: 1:200-1:2000 IF: 1:50-1:500

Application key: WB = Western blotting, IHC = Immunohistochemistry, IF = Immunofluorescence, IP = Immunoprecipitation

### Immunogen information

Immunogen:	Ag3687
GenBank accession number:	BC014848
Gene ID (NCBI):	5883
Full name:	RAD9 homolog A ( <i>S. pombe</i> )

### Product information

Purification method:	Antigen affinity purification
Storage:	PBS with 0.02% sodium azide and 50% glycerol pH 7.3. Store at -20°C.