

Galectin 2 Polyclonal Antibody

Catalog number: 12849-2-AP

Size: 65 µg/150 µl

Source: Rabbit

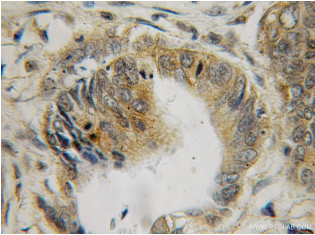
Isotype: IgG

Synonyms:

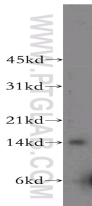
LGALS2; Gal 2, Galectin 2, HL14,

Lactose binding lectin 2,

LGALS2, S Lac lectin 2



Immunohistochemical of paraffin-embedded human colon cancer using 12849-2-AP(LGALS2 antibody) at dilution of 1:100 (under 10x lens)



human colon tissue were subjected to SDS PAGE followed by western blot with 12849-2-AP(LGALS2 antibody) at dilution of 1:300

Applications

Tested applications:	ELISA, WB, IHC
Cited applications:	IHC, WB
Species specificity:	Human; other species not tested.
Cited species:	Human
Calculated Galectin 2 MW:	132aa,15kd
Observed Galectin 2 MW:	15kd
Positive WB detected in	Human colon tissue
Positive IHC detected in	Human colon cancer tissue
Recommended dilution:	WB: 1:200-1:2000 IHC: 1:20-1:200

Application key: WB = Western blotting, IHC = Immunohistochemistry, IF = Immunofluorescence, IP = Immunoprecipitation

Immunogen information

Immunogen:	Ag3979
GenBank accession number:	BC029063
Gene ID (NCBI):	3957
Full name:	Lectin, galactoside-binding, soluble, 2

Product information

Purification method:	Antigen affinity purification
Storage:	PBS with 0.1% sodium azide and 50% glycerol pH 7.3. Store at -20°C.