

ALS2CR8 Polyclonal Antibody

Catalog number: 13434-1-AP

Size: 39 µg/150 µl

Source: Rabbit

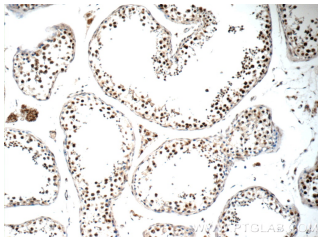
Isotype: IgG

Synonyms:

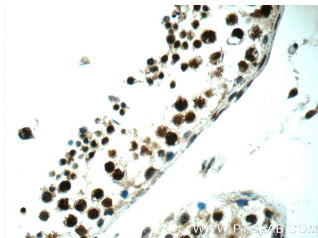
ALS2CR8; ALS2CR8, Calcium response factor, CARF,

DKFZp667N246, FLJ12675,

FLJ21579, NYD SP24



Immunohistochemistry of paraffin-embedded human testis tissue slide using 13434-1-AP (ALS2CR8 Antibody) at dilution of 1:50 (under 10x lens)



Immunohistochemistry of paraffin-embedded human testis tissue slide using 13434-1-AP (ALS2CR8 Antibody) at dilution of 1:50 (under 40x lens)

Applications

Tested applications:	ELISA, IHC
Species specificity:	Human; other species not tested.
Calculated ALS2CR8 MW:	725aa,81 kDa
Observed ALS2CR8 MW:	
Positive IHC detected in	Human testis tissue
Recommended dilution:	IHC: 1:20-1:200

Application key: WB = Western blotting, IHC = Immunohistochemistry, IF = Immunofluorescence, IP = Immunoprecipitation

Immunogen information

Immunogen:	Ag4238
GenBank accession number:	BC033777
Gene ID (NCBI):	79800
Full name:	Amyotrophic lateral sclerosis 2 (juvenile) chromosome region, candidate 8

Product information

Purification method:	Antigen affinity purification
Storage:	PBS with 0.1% sodium azide and 50% glycerol pH 7.3. Store at -20°C.