

## RBP3 Polyclonal Antibody

Catalog number: 14352-1-AP

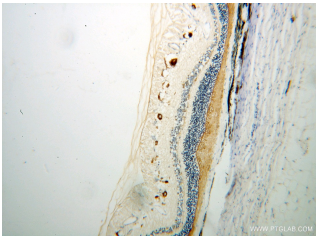
Size: 60 µg/150 µl

Source: Rabbit

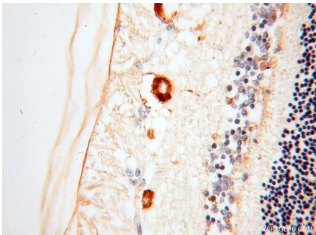
Isotype: IgG

Synonyms:

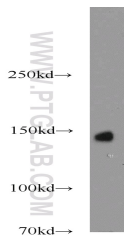
RBP3; D10S64, D10S65,  
D10S66, IRBP, RBP3, RBPI,  
Retinol binding protein 3



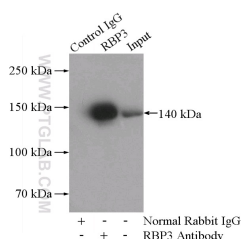
Immunohistochemical of paraffin-embedded human eye using 14352-1-AP(RBP3 antibody) at dilution of 1:50 (under 10x lens)



Immunohistochemical of paraffin-embedded human eye using 14352-1-AP(RBP3 antibody) at dilution of 1:50 (under 40x lens)



mouse eye tissue were subjected to SDS PAGE followed by western blot with 14352-1-AP(RBP3 antibody) at dilution of 1:600



IP Result of anti-RBP3

(IP:14352-1-AP, 4ug;

### Applications

Tested applications:	ELISA, IHC, IP, WB
Cited applications:	IP
Species specificity:	Human, Mouse, Rat; other species not tested.
Cited species:	Mouse
Calculated RBP3 MW:	135 kDa
Observed RBP3 MW:	140 kDa
Positive WB detected in	Mouse eye tissue, Y79 cells
Positive IP detected in	Y79 cells
Positive IHC detected in	Human eye tissue
Recommended dilution:	WB: 1:200-1:2000 IP: 1:200-1:1000 IHC: 1:20-1:200

Application key: WB = Western blotting, IHC = Immunohistochemistry, IF = Immunofluorescence, IP = Immunoprecipitation

### Immunogen information

Immunogen:	Ag5699
GenBank accession number:	BC039844
Gene ID (NCBI):	5949
Full name:	Retinol binding protein 3, interstitial

### Product information

Purification method:	Antigen affinity purification
Storage:	PBS with 0.02% sodium azide and 50% glycerol pH 7.3. Store at -20°C.

Detection:14352-1-AP 1:400)  
with Y79 cells lysate 2000ug.