

## PMM2 Polyclonal Antibody

Catalog number: 10666-1-AP

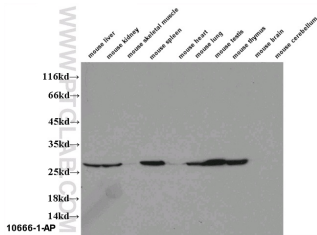
Size: 30 µg/150 µl

Source: Rabbit

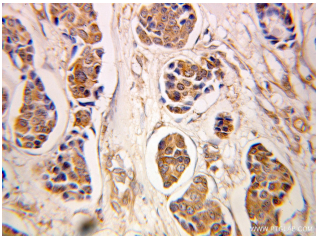
Isotype: IgG

Synonyms:

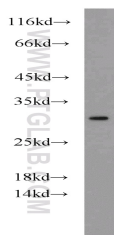
PMM2; CDG1, CDG1a, CDGS,  
phosphomannomutase 2, PMM  
2, PMM2



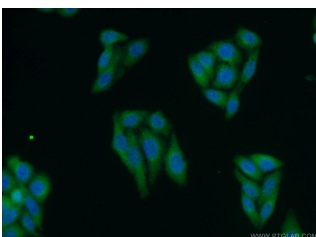
WB results of 10666-1-AP(PMM2 antibody) on several lysates.



Immunohistochemical of paraffin-embedded human breast cancer using 10666-1-AP(PMM2 antibody) at dilution of 1:100 (under 25x lens)



HepG2 cells were subjected to SDS PAGE followed by western blot with 10666-1-AP(PMM2 antibody) at dilution of 1:1000



Immunofluorescent analysis of HepG2 cells using 10666-1-AP(PMM2 Antibody) at dilution of 1:50 and Alexa

### Background

PMM2(Phosphomannomutase 2) belongs to the eukaryotic PMM family. It is involved in the synthesis of the GDP-mannose and dolichol-phosphate-mannose required for a number of critical mannosyl transfer reactions. PMM2 catalyzes the second step in the conversion of fructose-6P to GDP-mannose.

### Applications

Tested applications:	ELISA, IHC, WB, IP, IF
Cited applications:	WB
Species specificity:	Human, Mouse, Rat; other species not tested.
Cited species:	Human, mouse
Calculated PMM2 MW:	28 kDa
Observed PMM2 MW:	28-30 kDa
Positive WB detected in	HepG2 cells, HeLa cells
Positive IP detected in	Mouse lung tissue
Positive IHC detected in	Human breast cancer tissue
Positive IF detected in	HepG2 cells
Recommended dilution:	WB: 1:500-1:5000 IP: 1:500-1:5000 IHC: 1:20-1:200 IF: 1:20-1:200

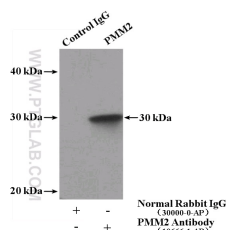
Application key: WB = Western blotting, IHC = Immunohistochemistry, IF = Immunofluorescence, IP = Immunoprecipitation

### Immunogen information

Immunogen:	Ag1031
GenBank accession number:	BC008310
Gene ID (NCBI):	5373
Full name:	Phosphomannomutase 2

### Product information

Purification method:	Antigen affinity purification
Storage:	PBS with 0.1% sodium azide and 50% glycerol pH 7.3. Store at -20°C.



IP Result of anti-PMM2 (IP:10666-1-AP, 4µg; Detection:10666-1-AP 1:1000) with mouse lung tissue lysate

Fluor 488-conjugated      3600ug.  
AffiniPure Goat Anti-Rabbit  
IgG(H+L)