

RAD17 Polyclonal Antibody

Catalog number: 13358-1-AP

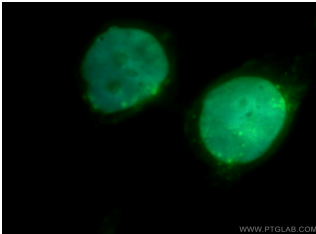
Size: 20 µg/150 µl

Source: Rabbit

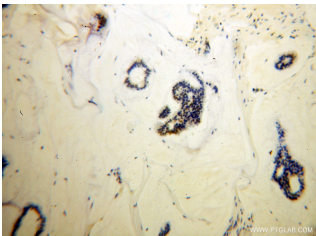
Isotype: IgG

Synonyms:

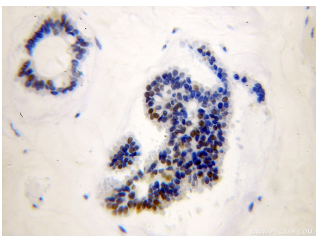
RAD17; CCYC, FLJ41520,
HRAD17, R24L, RAD17, RAD17
homolog (*S. pombe*), RAD17SP,
RAD24, RF C/activator 1
homolog



Immunofluorescent analysis of HeLa cells, using RAD17 antibody 13358-1-AP at 1:50 dilution and FITC-labeled donkey anti-rabbit IgG (green). Blue pseudocolor = DAPI (fluorescent DNA dye).



Immunohistochemical of paraffin-embedded human breast cancer using 13358-1-AP (RAD17 antibody) at dilution of 1:100 (under 10x lens)



Immunohistochemical of paraffin-embedded human breast cancer using 13358-1-AP (RAD17 antibody) at dilution of 1:100 (under 40x lens)

Applications

Tested applications:	ELISA, WB, IHC, IF
Species specificity:	Human, Mouse, Rat; other species not tested.
Calculated RAD17 MW:	681aa, 71kd
Observed RAD17 MW:	71kd
Positive WB detected in:	K-562 cells
Positive IHC detected in:	Human breast cancer tissue
Positive IF detected in:	Hela cells
Recommended dilution:	WB: 1:500 - 1:2000 IHC: 1:50 - 1:200 IF: 1:25 - 1:100

Application key: WB = Western blotting, IHC = Immunohistochemistry, IF = Immunofluorescence, IP = Immunoprecipitation

Immunogen information

Immunogen:	Ag4171
GenBank accession number:	BC032304
Gene ID (NCBI):	5884
Full name:	RAD17 homolog (<i>S. pombe</i>)

Product information

Purification method:	Antigen affinity purification
Storage:	PBS with 0.02% sodium azide and 50% glycerol pH 7.3. Store at -20°C.