

GRWD1 Polyclonal Antibody

Catalog number: 10354-1-AP

Size: 60 µg/150 µl

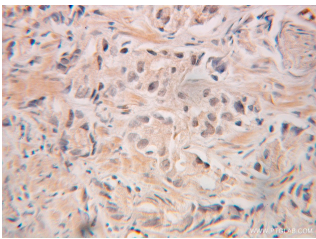
Source: Rabbit

Isotype: IgG

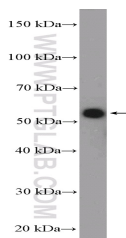
Synonyms:

GRWD1; GRWD, GRWD1,

KIAA1942, RRB1, WDR28



Immunohistochemical of paraffin-embedded human prostate cancer using 10354-1-AP (GRWD1 antibody) at dilution of 1:100 (under 25x lens)



HEK-293 cells were subjected to SDS PAGE followed by western blot with 10354-1-AP (GRWD1 Antibody) at dilution of 1:600

Background

WD-repeat proteins are a class of functionally divergent molecules that cooperate with other proteins to regulate cellular processes. WD-repeat proteins have been implicated in a variety of cellular functions that are mostly regulatory in nature, including cytoskeleton organization, vesicular fusion, pre-mRNA splicing, and cell cycle regulation. WD-repeat-containing protein designated glutamate-rich WD repeat (GRWD1) is a component of the 50S and 80S preribosomal complexes and plays a role in ribosome biogenesis and during myeloid differentiation its levels are regulated. [PMID:15885502]

Applications

Tested applications:	ELISA, IHC, WB
Species specificity:	Human, Mouse, Rat; other species not tested.
Calculated GRWD1 MW:	49 kDa
Observed GRWD1 MW:	49kd
Positive WB detected in	HEK-293 cells, PC-3 cells, SKOV-3 cells
Positive IHC detected in	Human prostate cancer tissue
Recommended dilution:	WB: 1:200-1:2000
	IHC: 1:20-1:200

Application key: WB = Western blotting, IHC = Immunohistochemistry, IF = Immunofluorescence, IP = Immunoprecipitation

Immunogen information

Immunogen:	Ag0367
GenBank accession number:	BC002440
Gene ID (NCBI):	83743
Full name:	Glutamate-rich WD repeat containing 1

Product information

Purification method:	Antigen affinity purification
Storage:	PBS with 0.1% sodium azide and 50% glycerol pH 7.3. Store at -20°C.