

Adrenomedullin Polyclonal Antibody

Catalog number: 10778-1-AP

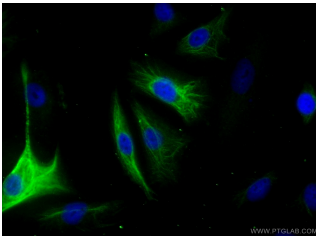
Size: 53 µg/150 µl

Source: Rabbit

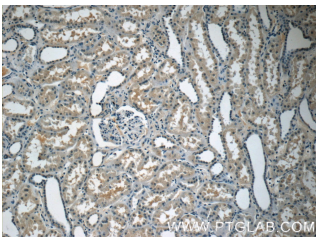
Isotype: IgG

Synonyms:

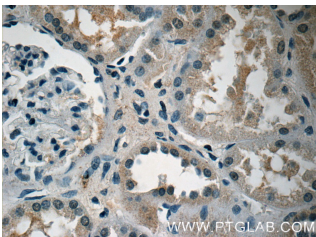
ADM; ADM, adrenomedullin,
AM, PAMP, ProAM N terminal
20 peptide, ProAM N20



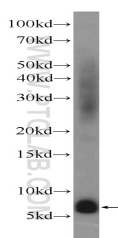
Immunofluorescent analysis of (-20 Ethanol) fixed A549 cells using 10778-1-AP(ADM Antibody) at dilution of 1:25 and Alexa Fluor 488-conjugated AffiniPure Goat Anti-Rabbit IgG(H+L)



Immunohistochemistry of paraffin-embedded human kidney tissue slide using 10778-1-AP(ADM Antibody) at dilution of 1:50 (under 10x lens)



Immunohistochemistry of paraffin-embedded human kidney tissue slide using 10778-1-AP(ADM Antibody) at dilution of 1:50 (under 40x lens)



human kidney tissue were subjected to SDS PAGE

Applications

Tested applications:	ELISA, IHC, WB, IF
Species specificity:	Human; other species not tested.
Calculated Adrenomedullin MW:	20 kDa
Observed Adrenomedullin MW:	6-8 kDa
Positive WB detected in	Human kidney tissue, A549 cells, fetal human brain tissue, human placenta tissue
Positive IHC detected in	Human kidney tissue, human pancreas cancer tissue
Positive IF detected in	A549 cells
Recommended dilution:	WB: 1:500-1:5000 IHC: 1:20-1:200 IF: 1:10-1:100

Application key: WB = Western blotting, IHC = Immunohistochemistry, IF = Immunofluorescence, IP = Immunoprecipitation

Immunogen information

Immunogen:	Ag1197
GenBank accession number:	BC015961
Gene ID (NCBI):	133
Full name:	Adrenomedullin

Product information

Purification method:	Antigen affinity purification
Storage:	PBS with 0.1% sodium azide and 50% glycerol pH 7.3. Store at -20°C.

followed by western blot with
10778-1-AP(ADM Antibody)
at dilution of 1:1000