

LASP1 Polyclonal Antibody

Catalog number: 10515-1-AP

Size: 66 µg/150 µl

Source: Rabbit

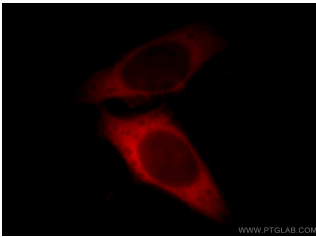
Isotype: IgG

Synonyms:

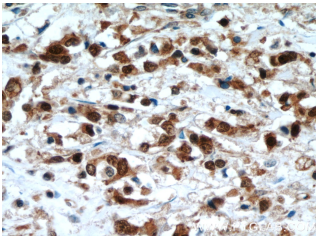
LASP1; Lasp 1, LASP1, LIM and

SH3 domain protein 1, LIM and

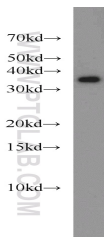
SH3 protein 1, MLN 50, MLN50



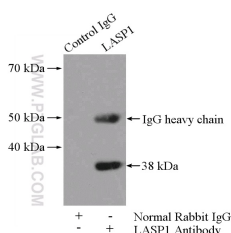
Immunofluorescent analysis of HeLa cells, using LASP1 antibody 10515-1-AP at 1:25 dilution and Rhodamine-labeled goat anti-rabbit IgG (red).



Immunohistochemical of paraffin-embedded human breast cancer using 10515-1-AP(LASP1 antibody) at dilution of 1:100 (under 40x lens)



MCF7 cells were subjected to SDS PAGE followed by western blot with 10515-1-AP(LASP1 antibody) at dilution of 1:2000



IP Result of anti-LASP1

(IP:10515-1-AP, 4µg;

Applications

Tested applications:	ELISA, WB, IF, IHC, IP
Cited applications:	IHC, WB
Species specificity:	Human, Mouse, Rat; other species not tested.
Cited species:	Human
Calculated LASP1 MW:	30 kDa
Observed LASP1 MW:	38-40 kDa
Positive WB detected in	MCF7 cells, MDA-MB-453s cells, mouse brain tissue, PC-3 cells, SGC-7901 cells
Positive IP detected in	Rat brain tissue
Positive IHC detected in	Human breast cancer tissue, human colon cancer tissue
Positive IF detected in	Hela cells
Recommended dilution:	WB: 1:1000-1:10000 IP: 1:500-1:5000 IHC: 1:20-1:200 IF: 1:10-1:100

Application key: WB = Western blotting, IHC = Immunohistochemistry, IF = Immunofluorescence, IP = Immunoprecipitation

Immunogen information

Immunogen:	Ag0800
GenBank accession number:	BC012460
Gene ID (NCBI):	3927
Full name:	LIM and SH3 protein 1

Product information

Purification method:	Antigen affinity purification
Storage:	PBS with 0.1% sodium azide and 50% glycerol pH 7.3. Store at -20°C.

Detection:10515-1-AP 1:1500)
with rat brain tissue lysate
4000ug.