

SEMA4F Polyclonal Antibody

Catalog number: 12474-1-AP

Size: 41 µg/150 µl

Source: Rabbit

Isotype: IgG

Synonyms:

SEMA4F; M SEMA, m Sema M,

PRO2353, Sema M, Sema W,

SEMA4F, SEMAM, Semaphorin

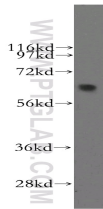
4F, Semaphorin M, Semaphorin

W, SEMAW

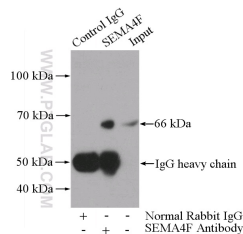
Applications

Tested applications:	ELISA, WB, IP
Species specificity:	Human, Mouse, Rat; other species not tested.
Calculated SEMA4F MW:	615aa, 66 kDa
Observed SEMA4F MW:	66 kDa, 84 kDa
Positive WB detected in	Mouse lung tissue, HepG2 cells, human liver tissue, mouse brain tissue, Y79 cells
Positive IP detected in	HepG2 cells
Recommended dilution:	WB: 1:500-1:5000 IP: 1:200-1:2000

Application key: WB = Western blotting, IHC = Immunohistochemistry, IF = Immunofluorescence, IP = Immunoprecipitation



mouse lung tissue were subjected to SDS PAGE followed by western blot with 12474-1-AP (SEMA4F antibody) at dilution of 1:400



IP Result of anti-SEMA4F (IP:12474-1-AP, 4µg; Detection:12474-1-AP 1:500) with HepG2 cells lysate 3600µg.

Immunogen information

Immunogen:	Ag3082
GenBank accession number:	BC018361
Gene ID (NCBI):	10505
Full name:	Sema domain, immunoglobulin domain (Ig), transmembrane domain (TM) and short cytoplasmic domain, (semaphorin) 4F

Product information

Purification method:	Antigen affinity purification
Storage:	PBS with 0.02% sodium azide and 50% glycerol pH 7.3. Store at -20°C.