

14-3-3 epsilon Polyclonal Antibody

Catalog number: 11648-2-AP

Size: 45 µg/150 µl

Source: Rabbit

Isotype: IgG

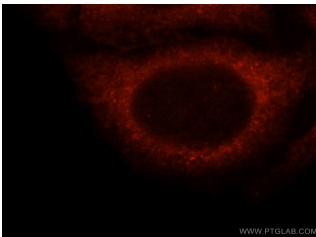
Synonyms:

YWHAE; 14 3 3 protein epsilon,

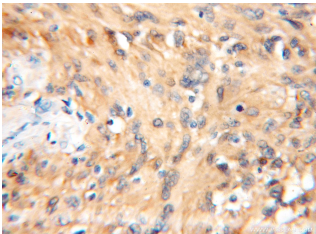
14 3 3E, 14-3-3, 14-3-3 epsilon,

FLJ45465, KCIP 1, MDCR, MDS,

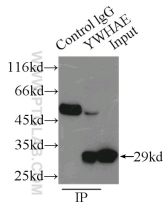
YWHAE



Immunofluorescent analysis of HepG2 cells, using YWHAE antibody 11648-2-AP at 1:25 dilution and Rhodamine-labeled goat anti-rabbit IgG (red).



Immunohistochemical of paraffin-embedded human gliomas using 11648-2-AP(14-3-3E antibody) at dilution of 1:100 (under 10x lens)



IP Result of anti-14-3-3E (IP:11648-2-AP, 3µg; Detection:11648-2-AP 1:1000) with A375 cells lysate 6000µg.

Background

14-3-3 epsilon (also known as YWHAE) is a member of 14-3-3 proteins which were the first phosphoserine/phosphothreonine-binding proteins to be discovered. 14-3-3 family members interact with a wide spectrum of proteins and possess diverse functions. Mammals express seven distinct 14-3-3 isoforms (gamma, epsilon, beta, zeta, sigma, theta, tau) that form multiple homo- and hetero- dimmers. 14-3-3 proteins display the highest expression levels in the brain, and have been implicated in several neurodegenerative diseases, including Alzheimer's disease and amyotrophic lateral sclerosis. This antibody was raised against full-length 14-3-3 epsilon.

Applications

| | |
|-------------------------------|--|
| Tested applications: | ELISA, WB, IHC, IF, IP, FC |
| Species specificity: | Human, Mouse, Rat; other species not tested. |
| Calculated 14-3-3 epsilon MW: | 255aa, 29 kDa |
| Observed 14-3-3 epsilon MW: | 29 kDa |
| Positive WB detected in | A375 cells, HeLa cells, human heart tissue |
| Positive IP detected in | A375 cells |
| Positive IHC detected in | Human gliomas tissue |
| Positive IF detected in | HepG2 cells |
| Positive FC detected in | HepG2 cells |
| Recommended dilution: | WB: 1:1000-1:10000 IP: 1:500-1:5000 IHC: 1:20-1:200 IF: 1:10-1:100 FC: N/A |

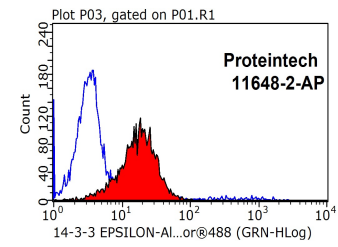
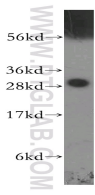
Application key: WB = Western blotting, IHC = Immunohistochemistry, IF = Immunofluorescence, IP = Immunoprecipitation

Immunogen information

| | |
|---------------------------|---|
| Immunogen: | Ag2247 |
| GenBank accession number: | BC000179 |
| Gene ID (NCBI): | 7531 |
| Full name: | Tyrosine 3-monooxygenase/tryptophan 5-monooxygenase activation protein, epsilon polypeptide |

Product information

| | |
|----------------------|---|
| Purification method: | Antigen affinity purification |
| Storage: | PBS with 0.1% sodium azide and 50% glycerol pH 7.3. Store at -20°C. |



A375 cells were subjected to SDS PAGE followed by western blot with 11648-2-AP(14-3-3E antibody) at dilution of 1:500

1X10⁶ HepG2 cells were stained with 0.2ug 14-3-3E antibody (11648-2-AP, red) and control antibody (blue). Fixed with 90% MeOH blocked with 3% BSA (30 min). Alexa Fluor 488-conjugated AffiniPure Goat Anti-Rabbit IgG(H+L) with dilution 1:1000.