

OLFM2 Polyclonal Antibody

Catalog number: 11997-1-AP

Size: 20 µg/150 µl

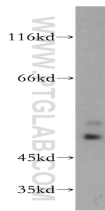
Source: Rabbit

Isotype: IgG

Synonyms:

OLFM2; OLFM2, olfactomedin

2, NOELIN2_V1, NOELIN2, OlfC



human brain tissue were subjected to SDS PAGE followed by western blot with 11997-1-AP(OLFM2 antibody) at dilution of 1:500

Applications

Tested applications:	ELISA, WB
Species specificity:	Human, mouse, rat; other species not tested.
Calculated OLFM2 MW:	454aa,51 kDa
Observed OLFM2 MW:	51kd
Positive WB detected in	Human brain tissue
Recommended dilution:	WB: 1:500-1:5000

Application key: WB = Western blotting, IHC = Immunohistochemistry, IF = Immunofluorescence, IP = Immunoprecipitation

Immunogen information

Immunogen:	Ag2642
GenBank accession number:	BC011361
Gene ID (NCBI):	93145
Full name:	Olfactomedin 2

Product information

Purification method:	Antigen affinity purification
Storage:	PBS with 0.1% sodium azide and 50% glycerol pH 7.3. Store at -20°C.