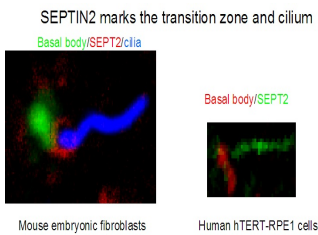
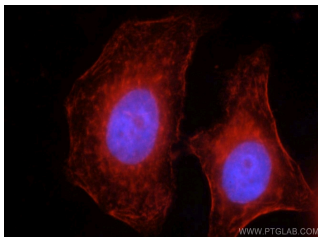


SEPT2 Polyclonal Antibody

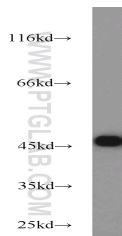
Catalog number: 11397-1-AP
Size: 27 µg/150 µl
Source: Rabbit
Isotype: IgG
Synonyms:
 SEPT2; DIFF6, hNedd5,
 KIAA0158, NEDD 5, NEDD5,
 Pnutl3, SEPT2, septin 2, septin2



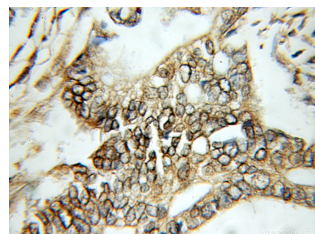
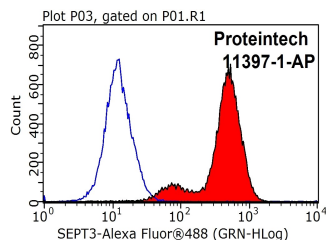
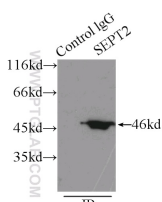
IF result from Dr. Kevin Corbit. SEPT2(11397-1-AP) marks the transition zone and cilium of Human hTERT-RPE1 cells and Mouse embryonic fibroblasts.



Immunofluorescent analysis of HepG2 cells, using SEPT2 antibody 113971-AP at 1:50 dilution and Rhodamine-labeled goat anti-rabbit IgG (red). Blue pseudocolor = DAPI (fluorescent DNA dye).



HeLa cells were subjected to SDS PAGE followed by western blot with 11397-1-AP(SEPT2 antibody) at dilution of 1:1000



Background

SEPT2, also named as DIFF6, KIAA0158, NEDD5 and Septin-2, belongs to the septin family. It is a filament-forming cytoskeletal GTPase. SEPT2 is required for normal organization of the actin cytoskeleton. It plays a role in ciliogenesis and collective cell movements. SEPT2 is coordinated expression with SEPT6 and SEPT7. (PMID:21737677)

Applications

Tested applications:	ELISA, IHC, IP, IF, WB, FC
Cited applications:	IF, IP, WB
Species specificity:	Human, Mouse, Rat; other species not tested.
Cited species:	Human, mouse, rat
Calculated SEPT2 MW:	41 kDa
Observed SEPT2 MW:	45 kDa
Positive WB detected in	HeLa cells, C6 cells, human skeletal muscle tissue, Jurkat cells, K-562 cells, mouse brain tissue, mouse heart tissue, mouse testis tissue, rat brain tissue
Positive IP detected in	Mouse brain tissue
Positive IHC detected in	Human pancreas cancer tissue, human liver cancer tissue
Positive IF detected in	HepG2 cells, hTERT-RPE1 cells and Mouse embryonic fibroblasts
Positive FC detected in	MCF-7 cells
Recommended dilution:	WB: 1:500-1:5000 IP: 1:500-1:5000 IHC: 1:20-1:200 IF: 1:20-1:200 FC: N/A

Application key: WB = Western blotting, IHC = Immunohistochemistry, IF = Immunofluorescence, IP = Immunoprecipitation

Immunogen information

Immunogen: Ag1946
GenBank accession number: BC014455
Gene ID (NCBI): 4735
Full name: Septin 2

Product information

Purification method: Antigen affinity purification
Storage: PBS with 0.1% sodium azide and 50% glycerol pH 7.3. Store at -20°C.

**IP Result of anti-SEPT2
(IP:11397-1-AP, 3ug;
Detection:11397-1-AP 1:1000)
with mouse brain tissue lysate
5000ug.**

**1X10⁶ MCF-7 cells were
stained with 0.2ug SEPT2
antibody (11397-1-AP, red)
and control antibody (blue).
Fixed with 90% MeOH
blocked with 3% BSA (30
min). Alexa Fluor 488-
conjugated AffiniPure Goat
Anti-Rabbit IgG(H+L) with
dilution 1:1000.**

**Immunohistochemical of
paraffin-embedded human
pancreas cancer using 11397-
1-AP(SEPT2 antibody) at
dilution of 1:50 (under 10x
lens)**