

MAN1A2 Polyclonal Antibody

Catalog number: 14049-1-AP

Size: 26 µg/150 µl

Source: Rabbit

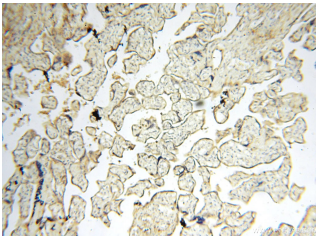
Isotype: IgG

Synonyms:

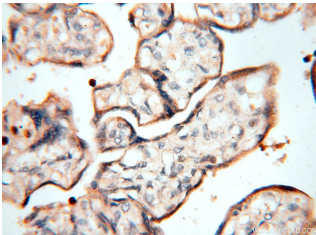
MAN1A2; Alpha 1,2

mannosidase IB, MAN1A2,

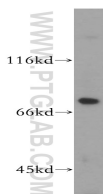
MAN1B



Immunohistochemical of paraffin-embedded human placenta using 14049-1-AP (MAN1A2 antibody) at dilution of 1:50 (under 10x lens)



Immunohistochemical of paraffin-embedded human placenta using 14049-1-AP (MAN1A2 antibody) at dilution of 1:50 (under 40x lens)



human placenta tissue were subjected to SDS PAGE followed by western blot with 14049-1-AP (MAN1A2 antibody) at dilution of 1:200

Background

The first group or Class I mannosidase is comprised of α 1–2 mannosidases from mammals and yeast with encoded polypeptides of 65–75 kDa. Most of them are Ca^{2+} -dependent enzymes located in the ER and/or Golgi which are inhibited by substrate mimics like kifunensine and deoxymannojirimycin. Their specificity is restricted to α (1–2) linkages, and they are mostly inactive towards artificial substrates like arylmannosides (PMID:10207175).

Applications

Tested applications:	ELISA, WB, IHC
Species specificity:	Human; other species not tested.
Calculated MAN1A2 MW:	641aa, 73kd
Observed MAN1A2 MW:	73kd
Positive WB detected in	Human placenta tissue
Positive IHC detected in	Human placenta tissue, human heart tissue, human lung tissue, human ovary tissue
Recommended dilution:	WB: 1:200-1:1000 IHC: 1:20-1:200

Application key: WB = Western blotting, IHC = Immunohistochemistry, IF = Immunofluorescence, IP = Immunoprecipitation

Immunogen information

Immunogen:	Ag5240
GenBank accession number:	BC063300
Gene ID (NCBI):	10905
Full name:	Mannosidase, alpha, class 1A, member 2

Product information

Purification method:	Antigen affinity purification
Storage:	PBS with 0.02% sodium azide and 50% glycerol pH 7.3. Store at -20°C.