

MAG Polyclonal Antibody

Catalog number: 14386-1-AP

Size: 34 µg/150 µl

Source: Rabbit

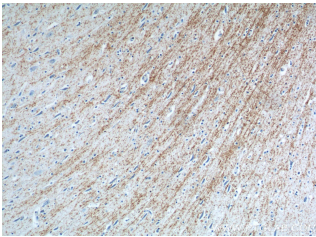
Isotype: IgG

Synonyms:

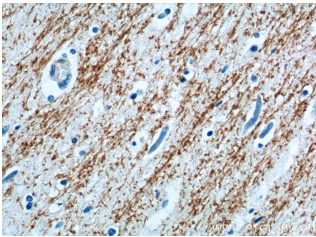
MAG; GMA, MAG, myelin

associated glycoprotein, S

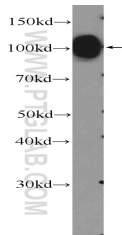
MAG, SIGLEC 4A, SIGLEC4A



Immunohistochemistry of paraffin-embedded human brain tissue slide using 14386-1-AP (MAG Antibody) at dilution of 1:200 (under 10x lens).



Immunohistochemistry of paraffin-embedded human brain tissue slide using 14386-1-AP (MAG Antibody) at dilution of 1:200 (under 40x lens).



mouse spinal cord tissue were subjected to SDS PAGE followed by western blot with 14386-1-AP (MAG Antibody) at dilution of 1:600

Background

MAG (myelin associated glycoprotein) is a 100-kDa transmembrane glycoprotein that is a member of the SIGLEC family of proteins. MAG is localized in periaxonal Schwann cell and oligodendroglial membranes of myelin sheaths where it functions in glia-axon interactions (PMID: 17241126). It is a functional ligand for the Nogo-66 receptor (PMID: 12089450). MAG is a cell adhesion molecule for postnatal neural development and is thought to be involved in the process of myelination.

Applications

Tested applications:	ELISA, WB, IHC
Species specificity:	Human, Mouse, Rat; other species not tested.
Calculated MAG MW:	69 kDa
Observed MAG MW:	100 kDa
Positive WB detected in	Mouse spinal cord tissue, rat brain tissue
Positive IHC detected in	Human brain tissue
Recommended dilution:	WB: 1:200-1:2000 IHC: 1:20-1:200

Application key: WB = Western blotting, IHC = Immunohistochemistry, IF = Immunofluorescence, IP = Immunoprecipitation

Immunogen information

Immunogen:	Ag5845
GenBank accession number:	BC053347
Gene ID (NCBI):	4099
Full name:	Myelin associated glycoprotein

Product information

Purification method:	Antigen affinity purification
Storage:	PBS with 0.1% sodium azide and 50% glycerol pH 7.3. Store at -20°C.