

UQCRH Polyclonal Antibody

Catalog number: 12364-1-AP

Size: 29 µg/150 µl

Source: Rabbit

Isotype: IgG

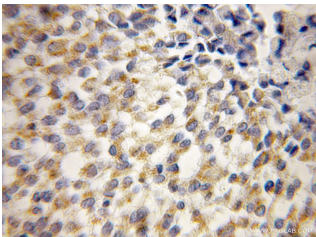
Synonyms:

UQCRH; Complex III subunit 6,

Complex III subunit VIII,

Mitochondrial hinge protein,

QCR6, UQCRH



Immunohistochemical of paraffin-embedded human breast cancer using 12364-1-AP (UQCRH antibody) at dilution of 1:50 (under 10x lens)

Background

UQCRH(ubiquinol-cytochrome c reductase hinge protein) belongs to the UQCRH/QCR6 family. It is a part of the mitochondrial respiratory chain that may mediate formation of the complex between cytochromes c and c1. The deduced 91-amino acid protein has a 13-amino acid N-terminal mitochondrial targeting presequence.

Applications

Tested applications:	ELISA, IHC
Species specificity:	Human,Mouse,Rat; other species not tested.
Calculated UQCRH MW:	91aa,11 kDa
Observed UQCRH MW:	
Positive IHC detected in	Human breast cancer tissue
Recommended dilution:	IHC: 1:20-1:200

Application key: WB = Western blotting, IHC= Immunohistochemistry, IF = Immunofluorescence, IP = Immunoprecipitation

Immunogen information

Immunogen:	Ag3037
GenBank accession number:	BC015177
Gene ID (NCBI):	7388
Full name:	Ubiquinol-cytochrome c reductase hinge protein

Product information

Purification method:	Antigen affinity purification
Storage:	PBS with 0.1% sodium azide and 50% glycerol pH 7.3. Store at -20°C.