

## VAMP2 Polyclonal Antibody

Catalog number: 10135-1-AP

Size: 43 µg/150 µl

Source: Rabbit

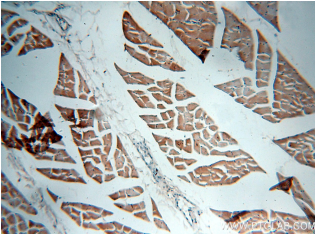
Isotype: IgG

Synonyms:

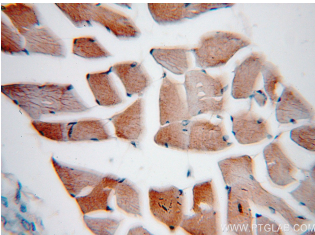
VAMP2; FLJ11460, SYB2,

Synaptobrevin 2, VAMP 2,

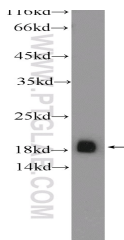
VAMP2



Immunohistochemical of paraffin-embedded human skeletal muscle using 10135-1-AP (VAMP2 antibody) at dilution of 1:50 (under 10x lens)



Immunohistochemical of paraffin-embedded human skeletal muscle using 10135-1-AP (VAMP2 antibody) at dilution of 1:50 (under 40x lens)



mouse brain tissue were subjected to SDS PAGE followed by western blot with 10135-1-AP (VAMP2 Antibody) at dilution of 1:600

### Background

VAMP2 (vesicle-associated membrane protein 2), also named as synaptobrevin 2, is a member of the SNARE (soluble NSF-attachment protein receptor) family of proteins. Characterized by a common sequence called the SNARE motif, SNARE proteins are involved in membrane fusion and vesicular transport (PMID: 11252968). VAMP2 consists of a short N-terminal sequence, a SNARE motif, and a C-terminal transmembrane region. It is required for fast calcium-triggered synaptic vesicle fusion. VAMP2 forms a stable complex with STX1 (syntaxin 1) and SNAP25 (synaptosomal-associated protein 25) during synaptic vesicle fusion (PMID: 16793874). It also forms a distinct complex with synaptophysin. VAMP2 is expressed in nervous system and some non-neuronal tissues, such as skeletal muscle (PMID: 18570252).

### Applications

Tested applications:	ELISA, IHC, WB
Species specificity:	Human, Mouse, Rat; other species not tested.
Calculated VAMP2 MW:	18 kDa
Observed VAMP2 MW:	19 kDa
Positive WB detected in	Mouse brain tissue, fetal human brain tissue
Positive IHC detected in	Human skeletal muscle tissue
Recommended dilution:	WB: 1:200-1:2000 IHC: 1:20-1:200

Application key: WB = Western blotting, IHC = Immunohistochemistry, IF = Immunofluorescence, IP = Immunoprecipitation

### Immunogen information

Immunogen:	Ag0179
GenBank accession number:	BC002737
Gene ID (NCBI):	6844
Full name:	Vesicle-associated membrane protein 2 (synaptobrevin 2)

### Product information

Purification method:	Antigen affinity purification
Storage:	PBS with 0.1% sodium azide and 50% glycerol pH 7.3. Store at -20°C.