

RGS5 Polyclonal Antibody

Catalog number: 11590-1-AP

Size: 35 µg/150 µl

Source: Rabbit

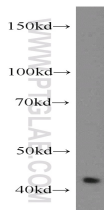
Isotype: IgG

Synonyms:

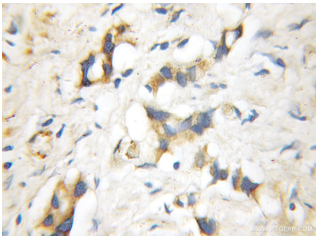
RGS5; MST092; MST106;

MST129; MSTP032; MSTP092;

MSTP106; MSTP129



human heart tissue were subjected to SDS PAGE followed by western blot with 11590-1-AP(RGS5 Antibody) at dilution of 1:1000



Immunohistochemistry of paraffin-embedded human prostate cancer using 11590-1-AP(RGS5 Antibody) at Dilution 1:50 (under 10x lens)

Background

RGS5 inhibits signal transduction by increasing the GTPase activity of G protein alpha subunits thereby driving them into their inactive GDP-bound form. It binds to G(i)-alpha and G(o)-alpha, but not to G(s)-alpha. The 42kd band recognized by this antibody is a RGS5-RGS5 dimer. (Pubmed:17762159)

Applications

Tested applications:	ELISA, WB, IHC
Species specificity:	Human, mouse, rat; other species not tested.
Positive WB detected in:	Human heart tissue, human skeletal muscle tissue, MCF7 cells, mouse heart tissue, mouse skeletal muscle tissue, rat skeletal muscle tissue
Calculated RGS5 MW:	181aa,21kd
Observed RGS5 MW:	42kd
Positive IHC detected in:	Human prostate cancer
Recommended dilution:	WB: 1:500-1:5000 IHC: 1:20-1:200

Application key: WB = Western blotting, IHC = Immunohistochemistry, IF = Immunofluorescence, IP = Immunoprecipitation, FC = Flow cytometry

Immunogen information

Immunogen:	Ag2196
GenBank accession number:	BC030059
Gene ID (NCBI):	8490
Full name:	Regulator of G-protein signaling 5

Product information

Purification method:	Antigen affinity purification
Storage:	PBS with 0.02% sodium azide and 50% glycerol pH 7.3. Store at -20°C.