

KDM5C Polyclonal Antibody

Catalog number: 14426-1-AP

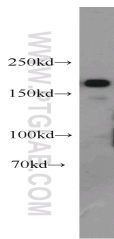
Size: 25 µg/150 µl

Source: Rabbit

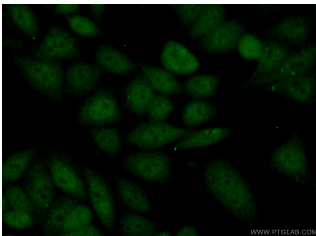
Isotype: IgG

Synonyms:

KDM5C; DXS1272E, Histone demethylase JARID1C, JARID1C, KDM5C, lysine (K) demethylase 5C, Lysine specific demethylase 5C, MRXJ, MRXSJ, Protein SmcX, Protein Xe169, SMCX, XE169



HeLa cells were subjected to SDS PAGE followed by western blot with 14426-1-AP(KDM5C antibody) at dilution of 1:500



Immunofluorescent analysis of (10% Formaldehyde) fixed HeLa cells using 14426-1-AP(KDM5C Antibody) at dilution of 1:50 and Alexa Fluor 488-conjugated AffiniPure Goat Anti-Rabbit IgG(H+L)

Background

KDM5C belongs to the ARID protein family that harbors conserved DNA-binding motifs and acts as a histone H3 lysine 4 demethylase, suggesting a potential role in epigenetic regulation during development, cell growth and differentiation [PMID:21575681]KDM5C protein is homologous to three other proteins of the human JARID1 family (JARID1A, JARID1B and JARID1C). This family shares several evolutionarily conserved domains, including the catalytic JmjC domain, JmjN domain, Arid/Bright domain, C5HC2 zinc-finger domain and two plant homeodomains (PHD), a motif that binds methyl-lysine residues [PMID:17320160,17320161].

Applications

Tested applications:	ELISA, WB, IF
Species specificity:	Human,Mouse,Rat; other species not tested.
Calculated KDM5C MW:	176 kDa
Observed KDM5C MW:	171-180 kDa
Positive WB detected in	HeLa cells
Positive IF detected in	HeLa cells
Recommended dilution:	WB: 1:200-1:2000 IF: 1:50-1:500

Application key: WB = Western blotting, IHC = Immunohistochemistry, IF = Immunofluorescence, IP = Immunoprecipitation

Immunogen information

Immunogen:	Ag5791
GenBank accession number:	BC054499
Gene ID (NCBI):	8242
Full name:	Lysine (K)-specific demethylase 5C

Product information

Purification method:	Antigen affinity purification
Storage:	PBS with 0.1% sodium azide and 50% glycerol pH 7.3. Store at -20°C.