

## RAB3IP/Rabin8 Polyclonal Antibody

Catalog number: 12321-1-AP

Size: 43 µg/150 µl

Source: Rabbit

Isotype: IgG

Synonyms:

RAB3IP; FLJ14660, FLJ22548,

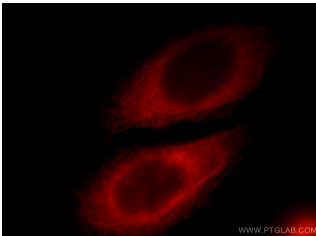
Rab 3A interacting protein,

Rab3A interacting protein,

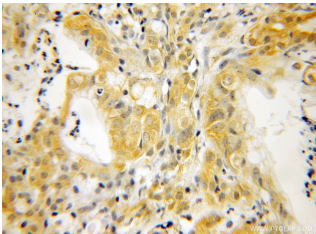
RAB3IP, Rabin 3, RABIN3,

Rabin8, SSX2 interacting

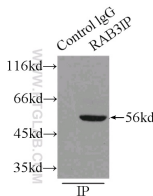
protein



Immunofluorescent analysis of HepG2 cells, using RAB3IP antibody 12321-1-AP at 1:25 dilution and Rhodamine-labeled goat anti-rabbit IgG (red).



Immunohistochemical of paraffin-embedded human pancreas cancer using 12321-1-AP (RABIN8 antibody) at dilution of 1:50 (under 10x lens)



IP Result of anti-RABIN8 (IP:12321-1-AP, 3µg; Detection:12321-1-AP 1:1000) with mouse lung tissue lysate 4500µg.

### Applications

Tested applications:	ELISA, WB, IHC, IF, IP
Cited applications:	IF, IP, WB
Species specificity:	Human, Mouse, Rat; other species not tested.
Cited species:	Canine, human, mouse, rat
Calculated RAB3IP/Rabin8 MW:	476aa, 53 kDa
Observed RAB3IP/Rabin8 MW:	56 kDa
Positive WB detected in	Human brain tissue, human heart tissue, mouse lung tissue
Positive IP detected in	Mouse lung tissue
Positive IHC detected in	Human pancreas cancer tissue, human pancreas tissue
Positive IF detected in	HepG2 cells
Recommended dilution:	WB: 1:1000-1:10000 IP: 1:500-1:5000 IHC: 1:20-1:200 IF: 1:10-1:100

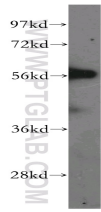
Application key: WB = Western blotting, IHC = Immunohistochemistry, IF = Immunofluorescence, IP = Immunoprecipitation

### Immunogen information

Immunogen:	Ag2974
GenBank accession number:	BC015548
Gene ID (NCBI):	117177
Full name:	RAB3A interacting protein (rabin3)

### Product information

Purification method:	Antigen affinity purification
Storage:	PBS with 0.1% sodium azide and 50% glycerol pH 7.3. Store at -20°C.



human brain tissue were  
subjected to SDS PAGE  
followed by western blot with  
12321-1-AP(RABIN8  
antibody) at dilution of 1:2000