

COPG Polyclonal Antibody

Catalog number: 12393-1-AP

Size: 20 µg/150 µl

Source: Rabbit

Isotype: IgG

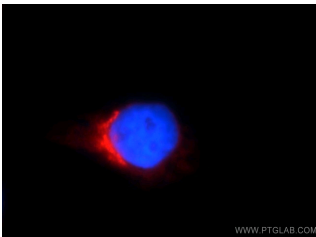
Synonyms:

COPG; Coatomer subunit

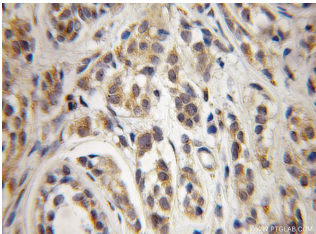
gamma, COPG, COPG1,

FLJ21068, Gamma coat protein,

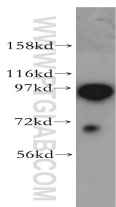
Gamma COP



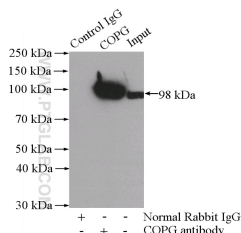
Immunofluorescent analysis of HepG2 cells, using COPG antibody 12393-1-AP at 1:25 dilution and Rhodamine-labeled goat anti-rabbit IgG (red). Blue pseudocolor = DAPI (fluorescent DNA dye).



Immunohistochemical of paraffin-embedded human breast cancer using 12393-1-AP (COPG antibody) at dilution of 1:50 (under 10x lens)



K-562 cells were subjected to SDS PAGE followed by western blot with 12393-1-AP (COPG antibody) at dilution of 1:500



Applications

Tested applications:	ELISA, WB, IHC, IF, IP
Species specificity:	Human, Mouse, Rat; other species not tested.
Calculated COPG MW:	874aa, 98 kDa
Observed COPG MW:	98 kDa
Positive WB detected in	K-562 cells, A375 cells, HeLa cells, human brain tissue, human colon tissue, NIH/3T3 cells
Positive IP detected in	K-562 cells
Positive IHC detected in	Human breast cancer tissue
Positive IF detected in	HepG2 cells, Hela cells
Recommended dilution:	WB: 1:1000-1:10000 IP: 1:1000-1:10000 IHC: 1:20-1:200 IF: 1:10-1:100

Application key: WB = Western blotting, IHC = Immunohistochemistry, IF = Immunofluorescence, IP = Immunoprecipitation

Immunogen information

Immunogen:	Ag3070
GenBank accession number:	BC020498
Gene ID (NCBI):	22820
Full name:	Coatomer protein complex, subunit gamma

Product information

Purification method:	Antigen affinity purification
Storage:	PBS with 0.1% sodium azide and 50% glycerol pH 7.3. Store at -20°C.

IP Result of anti-COPG
(IP:12393-1-AP, 4ug;
Detection:12393-1-AP 1:2000)
with K-562 cells lysate 3600ug.