

EXOSC1 Polyclonal Antibody

Catalog number: 12585-1-AP

Size: 35 µg/150 µl

Source: Rabbit

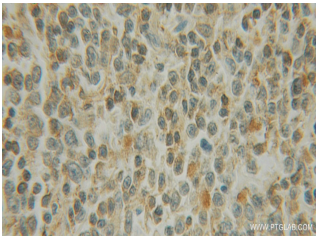
Isotype: IgG

Synonyms:

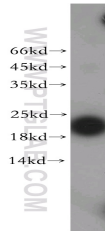
EXOSC1; CGI 108, CSL4, Csl4p,

EXOSC1, exosome component

1, hCsl4p, p13, SKI4, Ski4p



Immunohistochemical of paraffin-embedded human lymphoma using 12585-1-AP(EXOSC1 antibody) at dilution of 1:100 (under 10x lens)



SGC-7901 cells were subjected to SDS PAGE followed by western blot with 12585-1-AP(EXOSC1 antibody) at dilution of 1:200

Applications

Tested applications:	ELISA, WB, IHC
Species specificity:	Human, Mouse, Rat; other species not tested.
Calculated EXOSC1 MW:	195aa, 21 kDa
Observed EXOSC1 MW:	21 kDa
Positive WB detected in	SGC-7901 cells, HeLa cells, human stomach tissue, Jurkat cells
Positive IHC detected in	Human lymphoma tissue
Recommended dilution:	WB: 1:200-1:2000 IHC: 1:20-1:200

Application key: WB = Western blotting, IHC = Immunohistochemistry, IF = Immunofluorescence, IP = Immunoprecipitation

Immunogen information

Immunogen:	Ag3286
GenBank accession number:	BC022067
Gene ID (NCBI):	51013
Full name:	Exosome component 1

Product information

Purification method:	Antigen affinity purification
Storage:	PBS with 0.1% sodium azide and 50% glycerol pH 7.3. Store at -20°C.