

PGRMC1 Polyclonal Antibody

Catalog number: 12990-1-AP

Size: 81 µg/150 µl

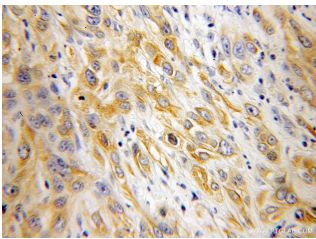
Source: Rabbit

Isotype: IgG

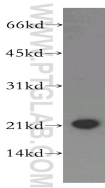
Synonyms:

PGRMC1; HPR6.6, MPR,

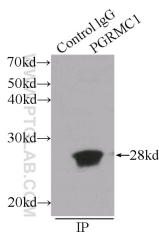
PGRMC, PGRMC1



Immunohistochemical of paraffin-embedded human cervical cancer using 12990-1-AP (PGRMC1 antibody) at dilution of 1:100 (under 10x lens)



HEK-293 cells were subjected to SDS PAGE followed by western blot with 12990-1-AP (PGRMC1 antibody) at dilution of 1:400



IP Result of anti-PGRMC1 (IP:12990-1-AP, 3µg; Detection:12990-1-AP 1:1000) with MCF-7 cells lysate 1600µg.

Background

Progesterone receptor membrane component 1 (PGRMC1) is a member of a multi-protein progesterone-binding complex. However, PGRMC1 shares homology with cytochrome b5-related proteins rather than hormone receptors (PMID: 18992768). It is a heme binding protein with binding sites for Src homology (SH2) and SH3 domain-containing proteins (PMID: 17583495). PGRMC1 is overexpressed in a variety of cancers, and thus represents an important biomarker for cancer progression and a potential target for anticancer drugs (PMID: 21730960). In nonmalignant tissues, PGRMC1 is highly expressed in the liver and kidney (PMID: 9705155; 20164297).

Applications

Tested applications:	ELISA, WB, IHC, IP
Cited applications:	IHC, WB
Species specificity:	Human, Mouse, Rat; other species not tested.
Cited species:	Human
Calculated PGRMC1 MW:	195aa, 22 kDa
Observed PGRMC1 MW:	22-28 kDa
Positive WB detected in	HEK-293 cells, HepG2 cells, human brain tissue, human liver tissue, MCF7 cells, mouse kidney tissue, mouse liver tissue, mouse ovary tissue
Positive IP detected in	MCF-7 cells
Positive IHC detected in	Human cervical cancer tissue, human lung cancer tissue, human ovary tumor tissue
Recommended dilution:	WB: 1:500-1:5000 IP: 1:500-1:5000 IHC: 1:20-1:200

Application key: WB = Western blotting, IHC = Immunohistochemistry, IF = Immunofluorescence, IP = Immunoprecipitation

Immunogen information

Immunogen:	Ag3643
GenBank accession number:	BC034238
Gene ID (NCBI):	10857
Full name:	Progesterone receptor membrane component 1

Product information

Purification method:	Antigen affinity purification
Storage:	PBS with 0.1% sodium azide and 50% glycerol pH 7.3. Store at -20°C.