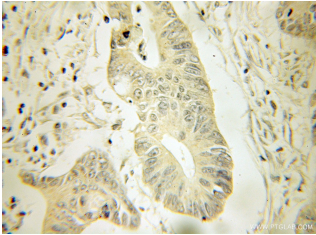
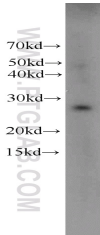


## HPGD Polyclonal Antibody

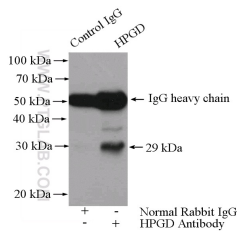
**Catalog number:** 11035-1-AP  
**Size:** 35 µg/150 µl  
**Source:** Rabbit  
**Isotype:** IgG  
**Synonyms:**  
HPGD; 15 PGDH, HPGD, PGDH,  
PGDH1, Prostaglandin  
dehydrogenase 1, SDR36C1



Immunohistochemical of paraffin-embedded human colon cancer using 11035-1-AP (HPGD antibody) at dilution of 1:50 (under 25x lens)



human placenta tissue were subjected to SDS PAGE followed by western blot with 11035-1-AP (HPGD antibody) at dilution of 1:300



**IP Result of anti-HPGD (IP:11035-1-AP, 4ug; Detection:11035-1-AP 1:300) with human placenta tissue lysate 4000ug.**

### Applications

<b>Tested applications:</b>	ELISA, WB, IHC, IP
<b>Species specificity:</b>	Human; other species not tested.
<b>Calculated HPGD MW:</b>	29 kDa
<b>Observed HPGD MW:</b>	25-28 kDa
<b>Positive WB detected in</b>	Human placenta tissue
<b>Positive IP detected in</b>	Human placenta tissue
<b>Positive IHC detected in</b>	Human colon cancer tissue
<b>Recommended dilution:</b>	WB: 1:200-1:1000
	IP: 1:200-1:1000
	IHC: 1:20-1:200

Application key: WB = Western blotting, IHC = Immunohistochemistry, IF = Immunofluorescence, IP = Immunoprecipitation

### Immunogen information

<b>Immunogen:</b>	Ag1499
<b>GenBank accession number:</b>	BC018986
<b>Gene ID (NCBI):</b>	3248
<b>Full name:</b>	Hydroxyprostaglandin dehydrogenase 15-(NAD)

### Product information

<b>Purification method:</b>	Antigen affinity purification
<b>Storage:</b>	PBS with 0.1% sodium azide and 50% glycerol pH 7.3. Store at -20°C.