

## Kallikrein 1 Polyclonal Antibody

Catalog number: 10815-1-AP

Size: 21 µg/150 µl

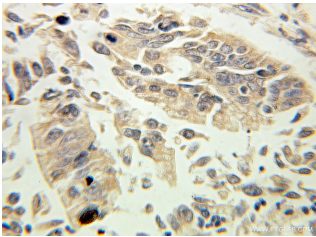
Source: Rabbit

Isotype: IgG

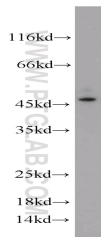
Synonyms:

KLK1; hK1, kallikrein 1, KLK1,

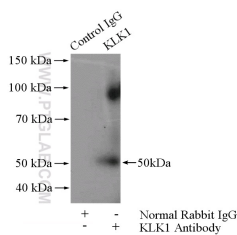
Klk6, KLKR, Tissue kallikrein



Immunohistochemical of paraffin-embedded human pancreas cancer using 10815-1-AP (KLK1 antibody) at dilution of 1:100 (under 40x lens)



A375 cells were subjected to SDS PAGE followed by western blot with 10815-1-AP (KLK1 antibody) at dilution of 1:500



IP Result of anti-KLK1 (IP:10815-1-AP, 4ug; Detection:10815-1-AP 1:500) with BxPC-3 cells lysate 1520ug.

### Background

KLK1 (tissue kallikrein 1) is a member of the tissue kallikrein family of serine proteases and is the primary kinin-generating enzyme in human airways. It is involved in the control of ionic transport in the renal tubule, an action that may not be kinin-mediated. This protein has 2 isoforms produced by alternative splicing.

### Applications

Tested applications:	ELISA, WB, IHC, IP
Cited applications:	IHC, WB
Species specificity:	Human; other species not tested.
Cited species:	Human
Calculated Kallikrein 1 MW:	29 kDa
Observed Kallikrein 1 MW:	45-50kd
Positive WB detected in	A375 cells, BxPC-3 cells
Positive IP detected in	BxPC-3 cells
Positive IHC detected in	Human pancreas cancer tissue
Recommended dilution:	WB: 1:200-1:2000
	IP: 1:200-1:2000
	IHC: 1:20-1:200

Application key: WB = Western blotting, IHC = Immunohistochemistry, IF = Immunofluorescence, IP = Immunoprecipitation

### Immunogen information

Immunogen:	Ag1119
GenBank accession number:	BC005313
Gene ID (NCBI):	3816
Full name:	Kallikrein 1

### Product information

Purification method:	Antigen affinity purification
Storage:	PBS with 0.1% sodium azide and 50% glycerol pH 7.3. Store at -20°C.