

CDC6 Polyclonal Antibody

Catalog number: 11640-1-AP

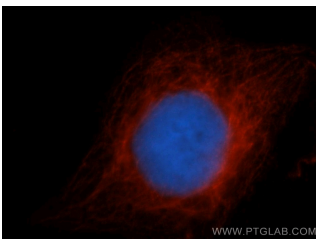
Size: 38 µg/150 µl

Source: Rabbit

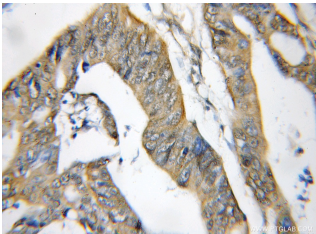
Isotype: IgG

Synonyms:

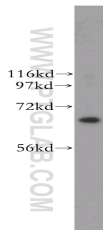
CDC6; Cdc18 related protein,
CDC18L, CDC6, CDC6 related
protein, HsCDC18, HsCDC6,
p62(cdc6)



Immunofluorescent analysis of HepG2 cells, using CDC6 antibody 11640-1-AP at 1:50 and Rhodamine-labeled goat anti-rabbit IgG (red). Blue pseudocolor = DAPI (fluorescent DNA dye).



Immunohistochemical of paraffin-embedded human colon cancer using 11640-1-AP(CDC6 antibody) at dilution of 1:50 (under 10x lens)



HeLa cells were subjected to SDS PAGE followed by western blot with 11640-1-AP(CDC6 antibody) at dilution of 1:400

Background

CDC6, also named as CDC18L and HsCDC18, belongs to the CDC6/cdc18 family. It is involved in the initiation of DNA replication and functions as a regulator at the early steps of DNA replication. The active Cdc6 functioning as a dimer at replication origins (10793143,15096526). It also participates in checkpoint controls that ensure DNA replication is completed before mitosis is initiated. It localizes in cell nucleus during cell cycle G1, but translocates to the cytoplasm at the start of S phase. The subcellular translocation of this protein during cell cycle is regulated through its phosphorylation by Cdks. Defects in CDC6 are the cause of Meier-Gorlin syndrome type 5 (MGORS5). MGORS5 is a syndrome characterized by bilateral microtia, aplasia/hypoplasia of the patellae, and severe intrauterine and postnatal growth retardation with short stature and poor weight gain. This antibody is a rabbit polyclonal antibody raised against residues near the C terminus of human CDC6.

Applications

Tested applications:	ELISA, WB, IHC, IF
Cited applications:	ChIP, IF, IHC, WB
Species specificity:	Human, Mouse, Rat; other species not tested.
Cited species:	Human, mouse
Calculated CDC6 MW:	560aa, 63 kDa
Observed CDC6 MW:	63 kDa
Positive WB detected in	HeLa cells, Jurkat cells, SMMC-7721 cells
Positive IHC detected in	Human colon cancer tissue, human colon tissue
Positive IF detected in	HepG2 cells
Recommended dilution:	WB: 1:1000-1:10000 IHC: 1:20-1:200 IF: 1:20-1:200

Application key: WB = Western blotting, IHC = Immunohistochemistry, IF = Immunofluorescence, IP = Immunoprecipitation

Immunogen information

Immunogen:	Ag2228
GenBank accession number:	BC025232
Gene ID (NCBI):	990
Full name:	Cell division cycle 6 homolog (S. cerevisiae)

Product information

Purification method:	Antigen affinity purification
Storage:	PBS with 0.1% sodium azide and 50% glycerol pH 7.3. Store at -20°C.